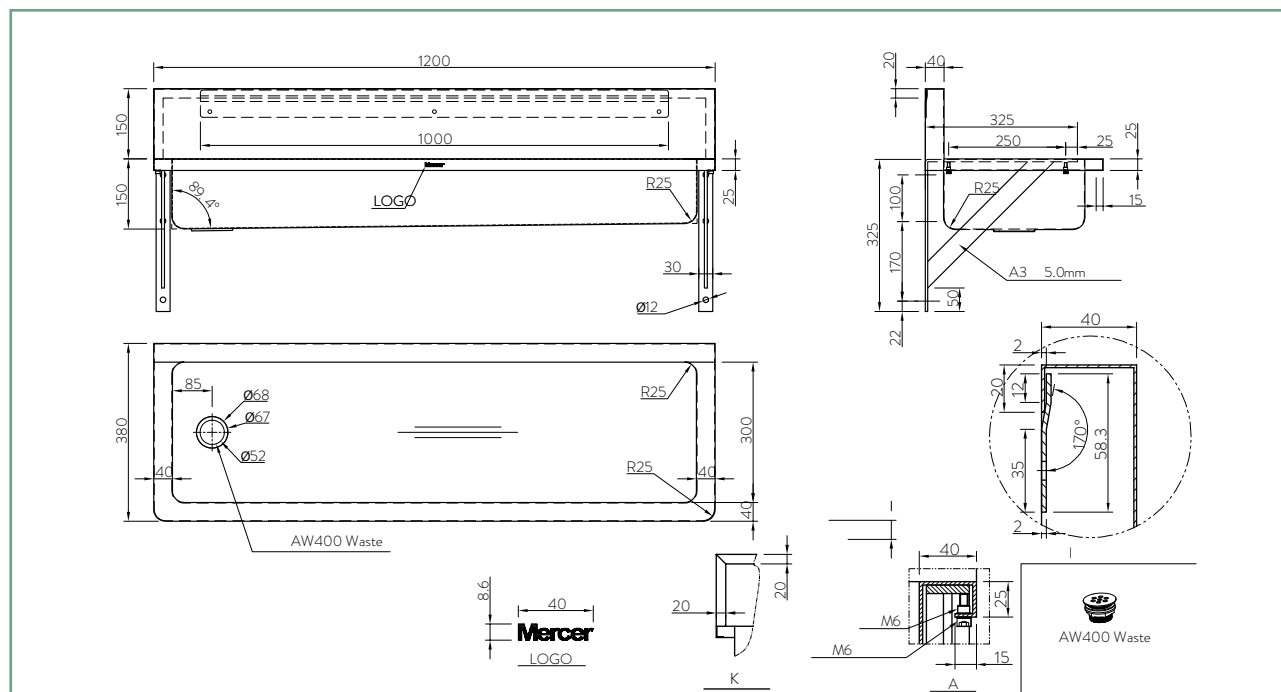
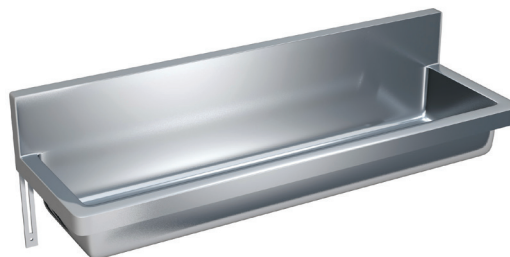


WTB1200 WASH TROUGH 1200MM

The Mercer WTB1200L Stainless Steel Wall Mounted Wash Trough is made from durable 304 grade stainless steel providing a stable and hygienic surface.

This stylish modern designed model would look great in any situation. The WTB1200L is suitable for factories, healthcare, education or public amenities.

Each corner of the WTB series has a radius to prevent injury from sharp corners and to make it easy to clean. It also features a 40mm boxed upstand to run services behind and fit snug against the wall.



SPECIFICATIONS

Code: WTB1200L

Type: Wash Trough

Dimensions: 1200 x 380 x 300mm

Material: 1.2mm 304 Stainless steel

Finish: Satin

FEATURES

Radius internal corners

Radius extental corners

Left hand waste position

40mm flat waste

Wall mounting brackets

OPTIONS

Tap holes through upstand

ASSOCIATED PRODUCTS



AS35300/BCR
Nobili Wall Mount
Times Button Tap



PTDSS1
Paper Towel
Dispenser



RBSS1
Stainless Steel
Rubbish Bin



WMSS1
Stainless Steel
Wall Mirror