

Mercer

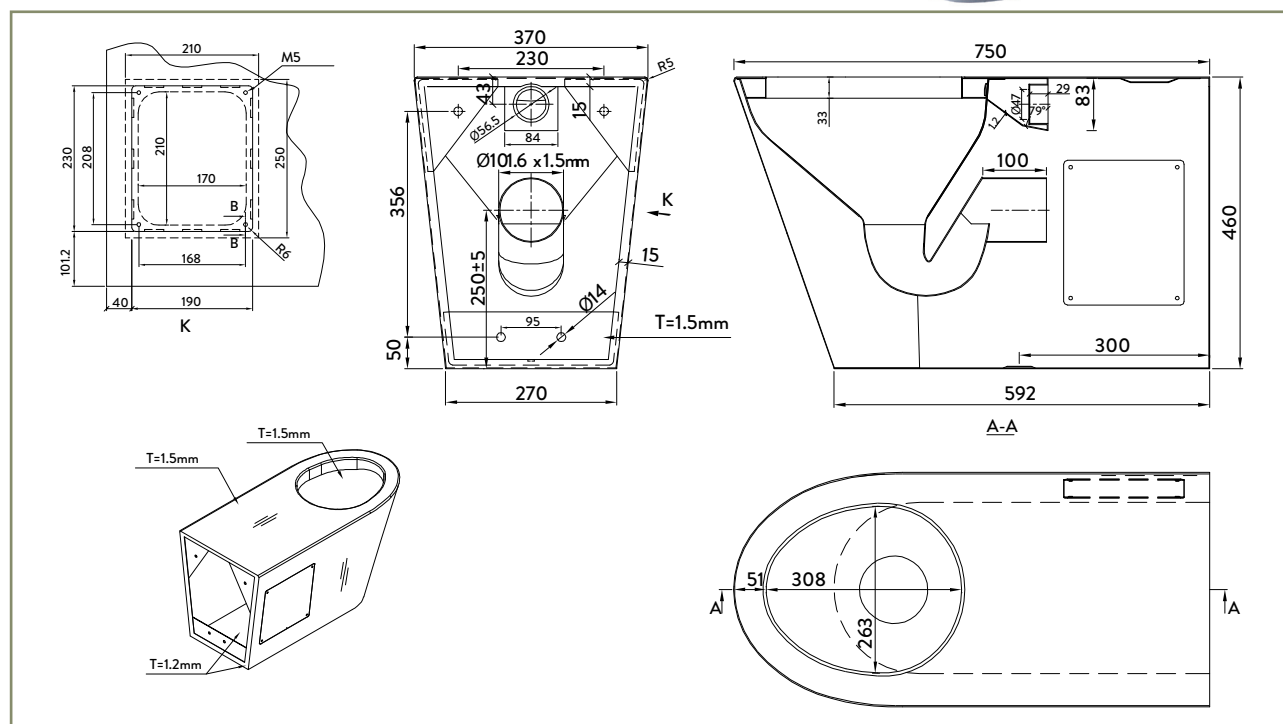
WFDTPP WALL FACING ACCESSIBLE TOILET PAN P TRAP

The WFDTP Wall Facing Accessible Toilet Pan is made from durable 304 grade stainless steel providing a stable and hygienic surface.

Its robust design and heavy duty stainless steel make it extremely durable and able to withstand heavy use.

The WFDTF is suitable for institutions, corrections, hospitality, education or public amenities.

The rear fixing installation plus the security fixed access panel is designed so access to the concealed plumbing is either through the wall or from the front.



SPECIFICATIONS

Code: WFDTP P

Type: Wall facing accessible toilet pan - P

Dimensions: 750 x 370 x 460mm

Material: 1.5mm 304 Stainless steel

Finish: Satin

FEATURES

Heavy duty

Vandel resistant

Rolled front edge, no sharp corners

Side access panel with security screws

OPTIONS

Toilet seat - white

Toilet seat - black

Toilet seat pads - white

Toilet seat pads - black

ASSOCIATED PRODUCTS



PTDSS1
Paper Towel
Dispenser



RBSS1
Stainless Steel
Rubbish Bin



SDSS01
Sensor Liquid
Soap Dispenser