

Oslo L-Shape Pullout Mixer Installation Guide

Installation Guide

Mercer L-Shape Pullout Mixers: AM041, AM042, AM043, AM045, AM047

Technical Specifications

Maximum pressure 500 kPa (5bar)

Minimum pressure 50 kPa (0.5bar)

Maximum temperature 80°C

Flow rate: 5.0l/min

For mains pressure only

Inlet connections: ½ inch

IMPORTANT: Read all instructions before installation.

General

Mercer recommends using a licensed plumber to install your new tapware.

All pipe work must be thoroughly flushed prior to installation.

Do not hydrostatic test the Mercer tapware as this may damage the ceramic cartridge.

Do not remove the ceramic cartridge.

Suitable for benchtops up to 40mm thick (check length of threaded mounting hardware before installation).

Hole diameter for mounting 35mm.

Installation – Gooseneck Pullout Mixers

1. Turn off water supply.
2. Drill 35mm Ø hole in benchtop or use existing hole. Note: Tap holes must be pre-drilled by the benchtop fabricator when using composite stone or ceramic benchtops or composite sinks with a tap mounting flange.
3. Ensure rubber washer is inserted into base of faucet body.
4. Remove locking clamp, metal & rubber washers from threaded mounting hardware, and ensure mounting hardware is firmly screwed into base of faucet.
5. Attach flexible hoses to extended pipe connectors and ensure correct polarity: Blue to C and Red to H.
6. Insert flexible hoses and pullout hose through tap hole in benchtop and lower tap assembly into position.
7. Slide rubber washer onto threaded mounting hardware, followed by metal washer and then locking clamp. Tighten clamp ensuring tap is correctly aligned. Tighten screws to lock into place.

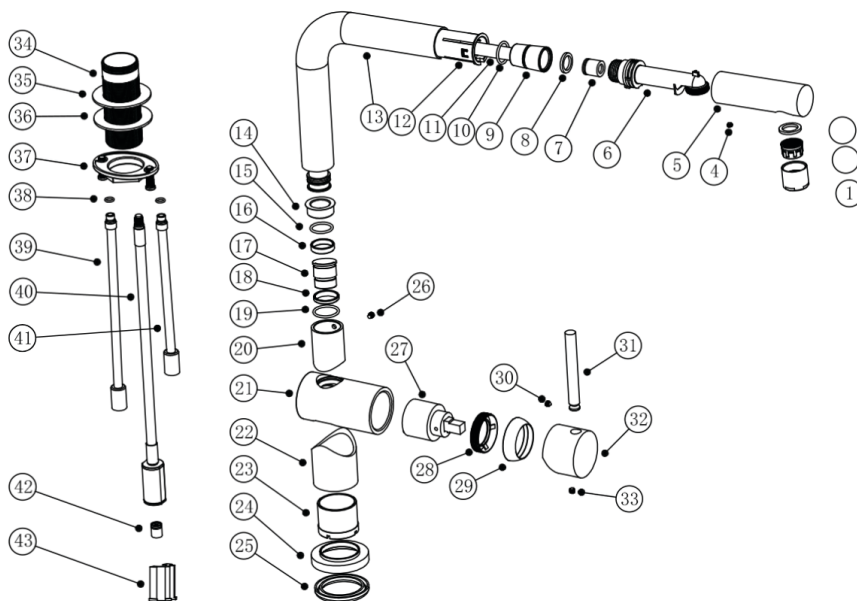
Note: For stainless steel benchtops fit plastic triangular support before fitting washers and locking clamp.

8. Fit counterweight to flexible pullout hose so that spray nozzle is approximately 50mm above bottom of sink when fully extended.

Note: To ensure spray nozzle retracts smoothly a clear space of up to 550mm is required between the underside of benchtop and the top of any shelf or the cabinetry base.

9. Connect flexible hoses to hot and cold water supplies. Turn on water and check for leaks.

Oslo L-Shape Pullout Mixer Installation Guide L-SHAPE PULLOUT MIXER PARTS LIST



Parts List / Number

1. Aerator Cap - 680400010045
2. Aerator - 610700000003
3. Spout O Ring - 680900000001
4. Screw - 610800000026
5. Hand Sprayer - 680300010046
6. Plastic Insert - 610500000014
7. Flow Controller - 610700000009
8. Hand Spray hose kit - 680400010043
9. Hand Spray hose kit - 68040001004310
10. Hand Spray hose kit - 680400010043
11. Pull out hose - 611000000013
12. Spout - 610500000013
13. Spout - 680300010147
14. Washer - 680500000033
15. O Ring - 610900000004
16. Collar Nut - 680500000011
17. Faucet Body Kit - 6804000000217
18. Faucet Body Kit - 6805000000123
19. Faucet Body Kit - 610900000004025
20. Faucet Body Kit - 680400010125
21. Faucet Body Kit - 680400010126
22. Faucet Body Kit - 680400010151
23. Faucet Body Kit - 6804000000218
24. Base - 680400010146
25. Rubber Washer - 6109000000005
26. Screw - 6108000000037
27. Cartridge - WBP913551
28. Collar Nut - 6108000000010
29. Trim Cap - 680400010008
30. Screw - 6808000000009
31. Faucet Lever - 680400010010
32. Handle - 680400010002
33. Washer - 6808000000008
34. Mounting Hardware - 6804000000254
35. Rubber Washer - 6109000000006
36. Metal Washer - 6108000000010
37. Locking Clamp - 6108000000003
38. O Ring - 6109000000017
39. Cold Water Supply - 6803090000011
40. Quick Connector - 6110000000014
41. Hot Water Supply - 6803090000012
42. Flow Controller - 6107000000013
43. Pull out hose guide - 6105000000009
44. Flexible hose - 6110000000002