

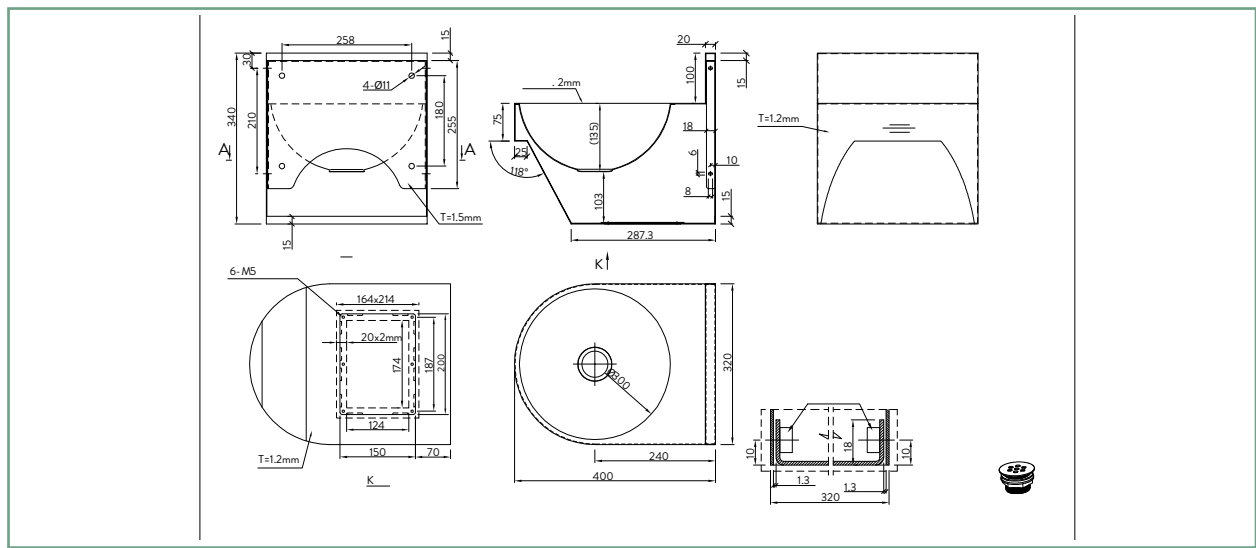
HWB6 ACCESSIBLE HAND WASH BASIN ROUND BOWL

The HWB6 Stainless Steel Wall Mounted Accessible Hand Wash Basin is made from durable 304 grade stainless steel providing a stable and hygienic surface.

This stylish modern designed model would look great in any situation.

The HWB6 is suitable for hospitality, education or public amenities. Access to the plumbing is from the bottom to make it easy to maintain and cost effective.

AS/NZS 1730 NZS4121 compliant.



SPECIFICATIONS	FEATURES	OPTIONS
Code: HWB6	40mm stainless steel waste (supplied)	Tap holes
Type: Wall mounted hand wash basin	Rear keyhole fixing points	
Dimensions: 320 x 400 x 338mm	Low profile trap supplied (AW401)	
Material: 1.2mm 304 Stainless steel		
Finish: Satin		
AS/NZS 1730 NZS4121 compliant.		

ASSOCIATED PRODUCTS



PTDSS1
Paper Towel
Dispenser



SDSS01
Sensor
Liquid Soap
Dispenser



AM071
Time Flow
Basin Tap