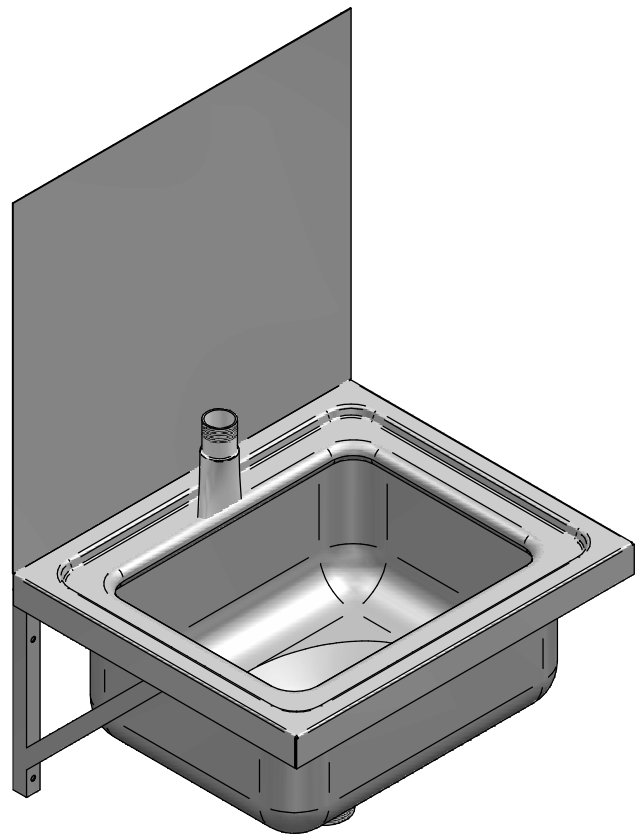
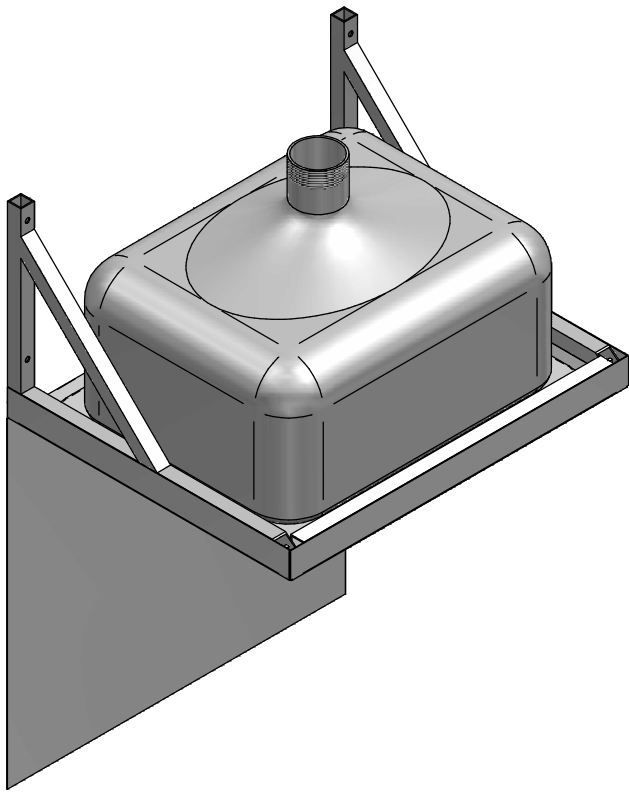


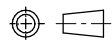
Part Number	Title	Material
567	Wall mount Sluice Sink	

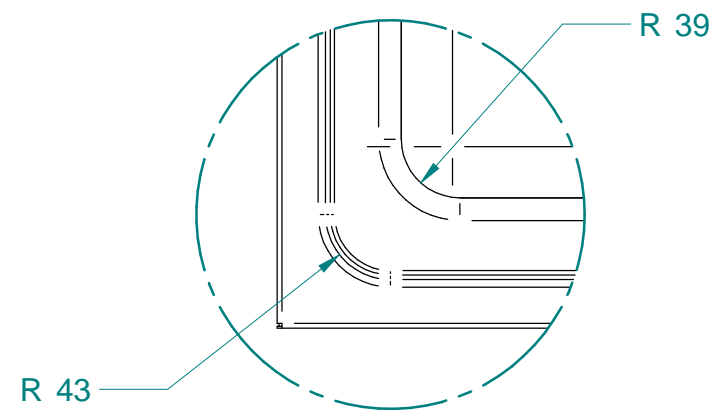
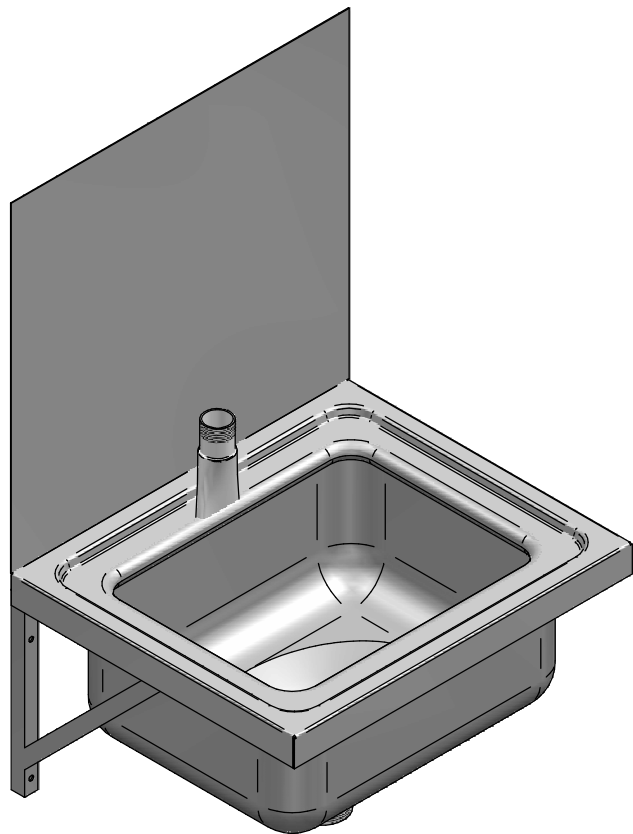


1:10

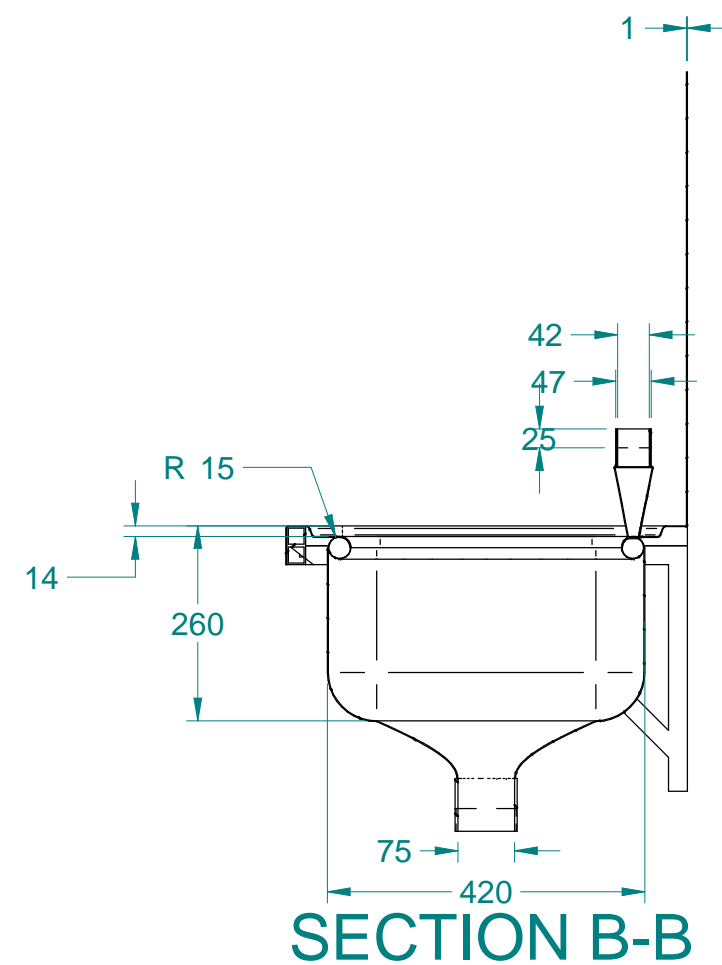
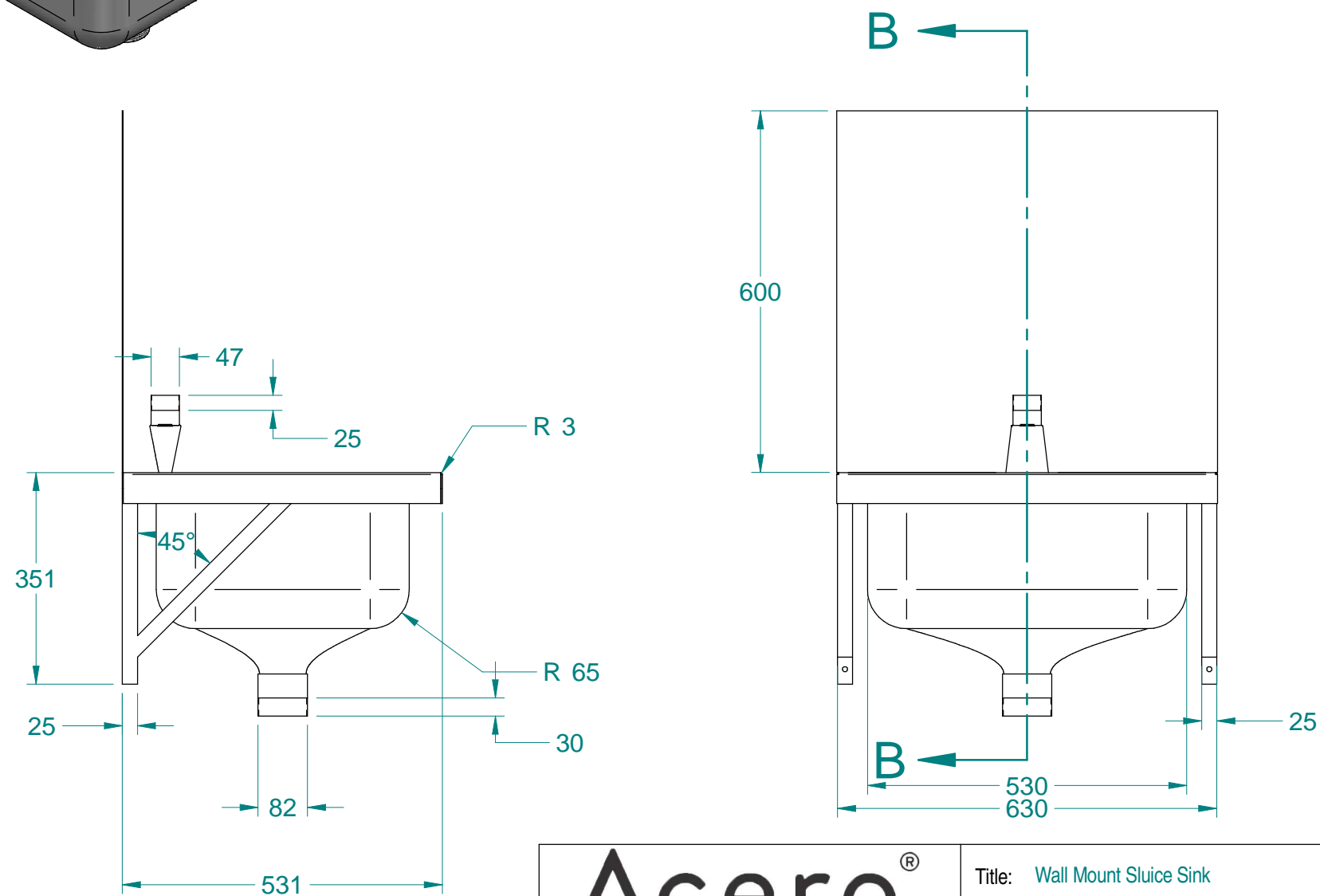
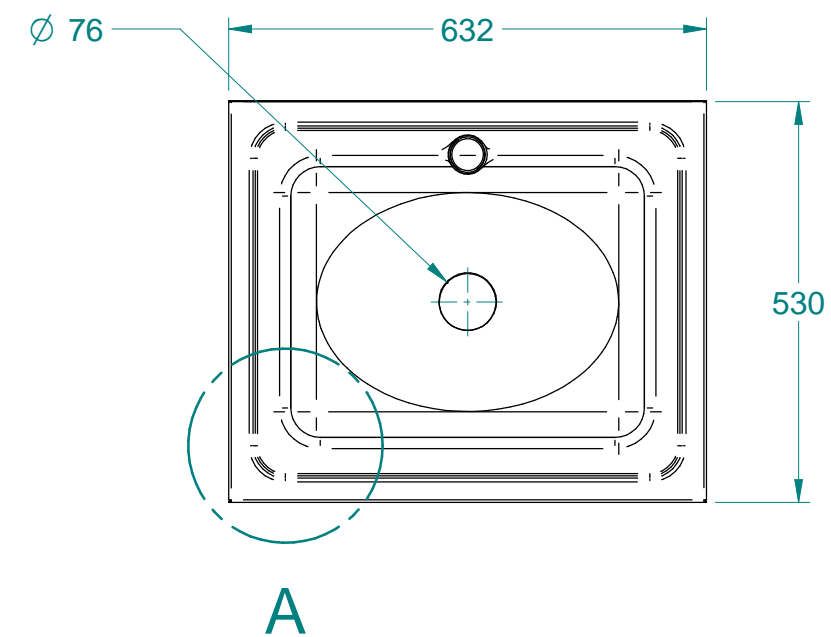


NOTE: ALL Dimensions are Reference!


<div>Acero[®]</div> <div>www.acero.co.nz</div> <div>45 Lunns Road Middleton Christchurch 8024 New Zealand</div> <div>Phone: 0800 2637237</div>	Title: Wall Mount Sluice Sink				Drawn By:	MDA-DN
	Tolerances: (Unless Stated)				Drawn Date:	29 Jan 2019
	X. = ± 2.0	Material: Stainless Steel 304	Third Angle Projection	 Size: A4	Checked By:	MDA-DN
	X.X = ± 1.0	Size: 1.2mm	All Dimensions in mm		Checked Date:	24JAN2019
	X.XX = ± 0.5	Finish: -	Mass: 22.68 kg	Rev: 00	Drawing No: 568	
	Angles = ± 1.0°	Form: -	Sheet: 1 of 2	Status: Released		



DETAIL A



NOTE: ALL Dimensions are Reference!

 www.acero.co.nz 45 Lunns Road Middleton Christchurch 8024 New Zealand Phone: 0800 2637237	Title: Wall Mount Sluice Sink				Drawn By:	MDA-DN
	Tolerances: (Unless Stated)				Drawn Date:	29 Jan 2019
	X. = ± 2.0				Checked By:	MDA-DN
	X.X = ± 1.0				Checked Date:	24JAN2019
X.XX = ± 0.5				Material: Stainless Steel 304	Size: A4	
Angles = ± 1.0°				Size: 1.2mm		
				Finish: -	Third Angle Projection	Rev: 00
				Form: -	All Dimensions in mm	Status: Released
				Mass: 22.68 kg	Sheet: 2 of 2	Drawing No: 568