

TYPE C CUSTOM WASH TROUGH

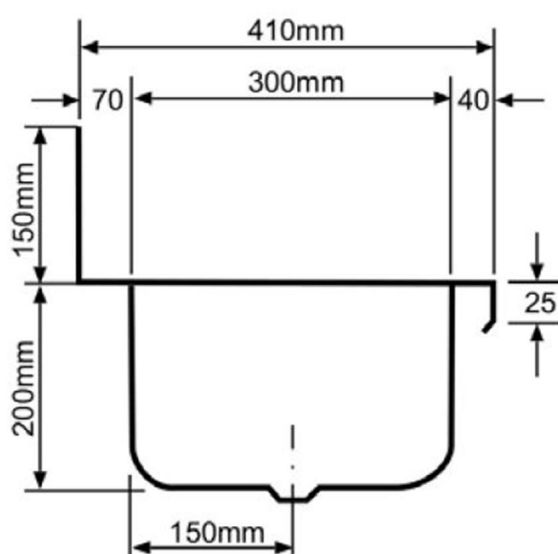
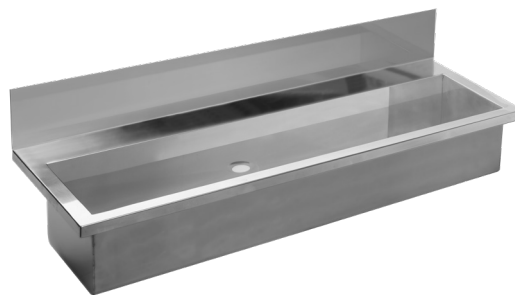
The Type C Custom stainless steel wash trough is made in New Zealand by Acero.

The unit can be made to any length from heavy duty 304 or 316 stainless steel.

The Type C wash trough has round corners with a 70mm tap edge and is a cost effective option when a non standard length or waste position is required.

The unit is supplied with a 40mm waste that can be left, right or centre position.

Wall brackets for mounting are included.



SPECIFICATIONS

SKU: Round corners with tap ledge type C

Type: Wash Trough

Overall size: To be specified on order

Material: 1.2mm Heavy Duty, 304 or 316 grade stainless steel

Waste: 40mm round stainless steel, placement to be specified

Fixing: Wall mounting brackets included

ASSOCIATED PRODUCTS



AS35300/BCR
Nobili Wall Mount
Times Button Tap



PTDSS1
Paper Towel
Dispenser



RBSS1
Stainless Steel
Rubbish Bin



WMSS1
Stainless Steel
Wall Mirror