

# Cologne Gooseneck Pullout Mixer Installation Guide

## Installation Guide

Mercer Gooseneck Pullout Mixers: AM091, AM093, AM092, AM095, AM097

## Technical Specifications

Maximum pressure 500 kPa (5bar)

Minimum pressure 50 kPa (0.5bar)

Maximum temperature 80°C

Flow rate: TBA

For mains pressure only

Inlet connections: ½ inch

**IMPORTANT: Read all instructions before installation.**

## General

Mercer recommends using a licensed plumber to install your new tapware.

All pipe work must be thoroughly flushed prior to installation.

Do not hydrostatic test the Mercer tapware as this may damage the ceramic cartridge.

Do not remove the ceramic cartridge.

Suitable for benchtops up to 40mm thick (check length of threaded mounting hardware before installation).

Hole diameter for mounting 35mm.

## Installation – Gooseneck Pullout Mixers

1. Turn off water supply.
2. Drill 35mm Ø hole in benchtop or use existing hole. Note: Tap holes must be pre-drilled by the benchtop fabricator when using composite stone or ceramic benchtops or composite sinks with a tap mounting flange.
3. Ensure rubber washer is inserted into base of faucet body.
4. Remove locking clamp, metal & rubber washers from threaded mounting hardware, and ensure mounting hardware is firmly screwed into base of faucet.
5. Attach flexible hoses to extended pipe connectors and ensure correct polarity: Blue to C and Red to H.
6. Insert flexible hoses and pullout hose through tap hole in benchtop and lower tap assembly into position.
7. Slide rubber washer onto threaded mounting hardware, followed by metal washer and then locking clamp. Tighten clamp ensuring tap is correctly aligned. Tighten screws to lock into place.

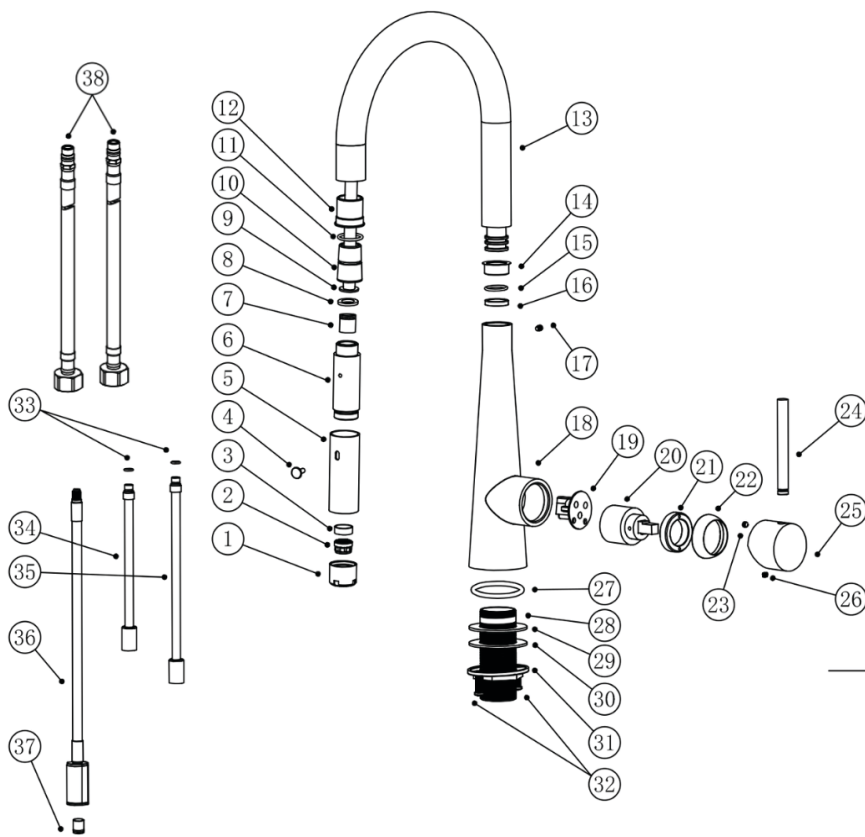
**Note:** For stainless steel benchtops fit plastic triangular support before fitting washers and locking clamp.

8. Fit counterweight to flexible pullout hose so that spray nozzle is approximately 50mm above bottom of sink when fully extended.

**Note:** To ensure spray nozzle retracts smoothly a clear space of up to 550mm is required between the underside of benchtop and the top of any shelf or the cabinetry base.

9. Connect flexible hoses to hot and cold water supplies. Turn on water and check for leaks.

## Cologne Gooseneck Pullout Mixer Installation Guide GOOSENECK PULLOUT MIXER PARTS LIST



### Parts List / Number

1. Aerator Cap - 680400010194
2. Aerator - 610700000023
3. Hand Spray Hose Kit - 610500000036
4. Hand Spray Hose Kit - 610400010018
5. Hand Spray Hose Kit - 610400010017
6. Hand Spray Hose Kit - 610500000037
7. Hand Spray Hose Kit - 610700000024
8. Hand Spray Hose Kit - 610700000025
9. Pull Out Hose - 611000000013
10. Connector - 680400010192
11. O Ring - 610900000070
12. Spout - 680500000085
13. Spout - 680300010092
14. Washer - 680500000083
15. O Ring - 610900000004
16. Collar Nut - 680500000084
17. Screw - 610800000029
18. Faucet Body Kit - 680300010088
19. Faucet Body Kit - 610400000009
20. Cartridge - WBP913551
21. Collar Nut - 610800000001
22. Trim Cap - 680400010008
23. Screw - 610800000009
24. Faucet Lever - 680400010010
25. Handle - 680400010010
26. Screw - 610800000008
27. O Ring - 610900000082
28. Mounting Hardware - 680400000254
29. Rubber Washer - 610900000006
30. Metal Washer - 610800000010
31. Locking Clamp - 610800000003
32. Screw - 610800000011
33. O Ring - 610900000017
34. Hot Water Supply - 680309000012
35. Cold Water Supply - 680309000011
36. Quick Connector - 611000000014
37. Flow Controller - 610700000026
38. Flexible Hose - 611000000002