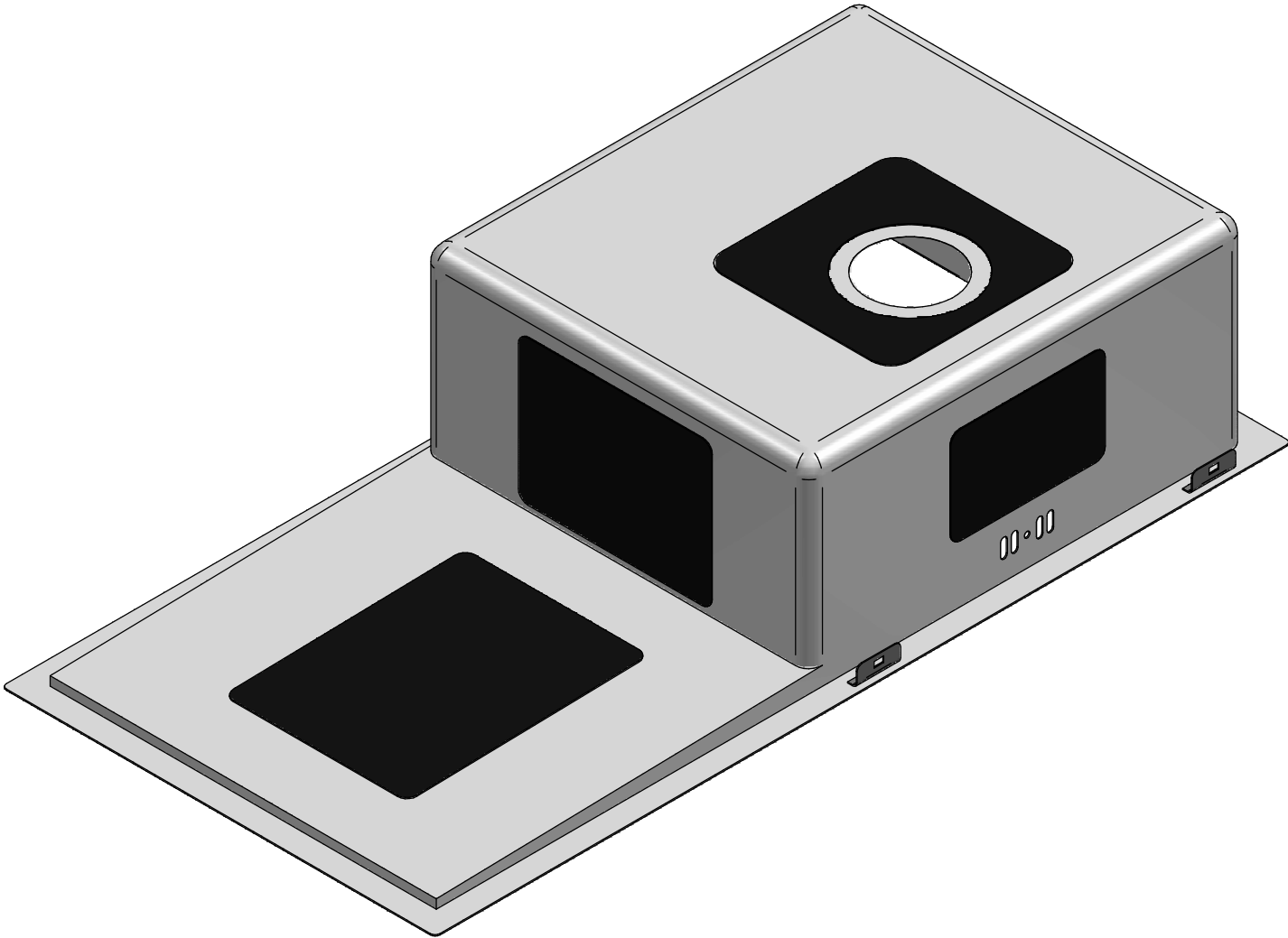
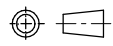


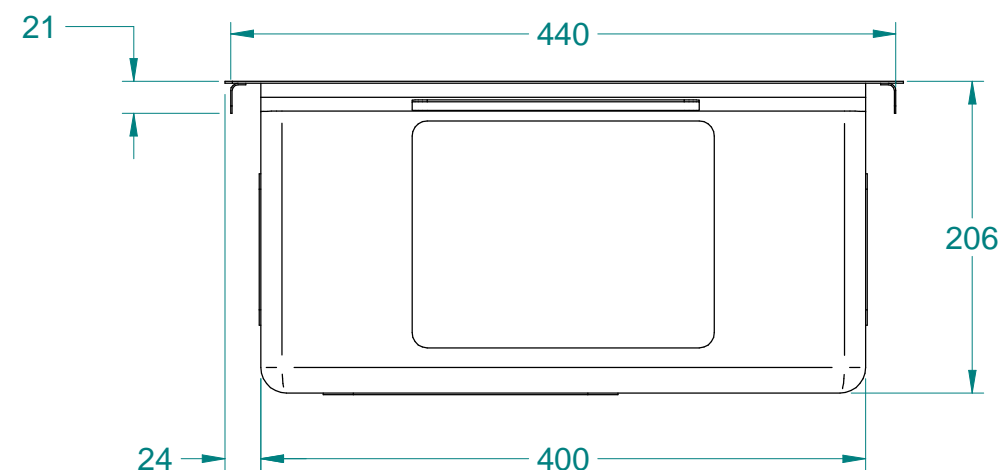
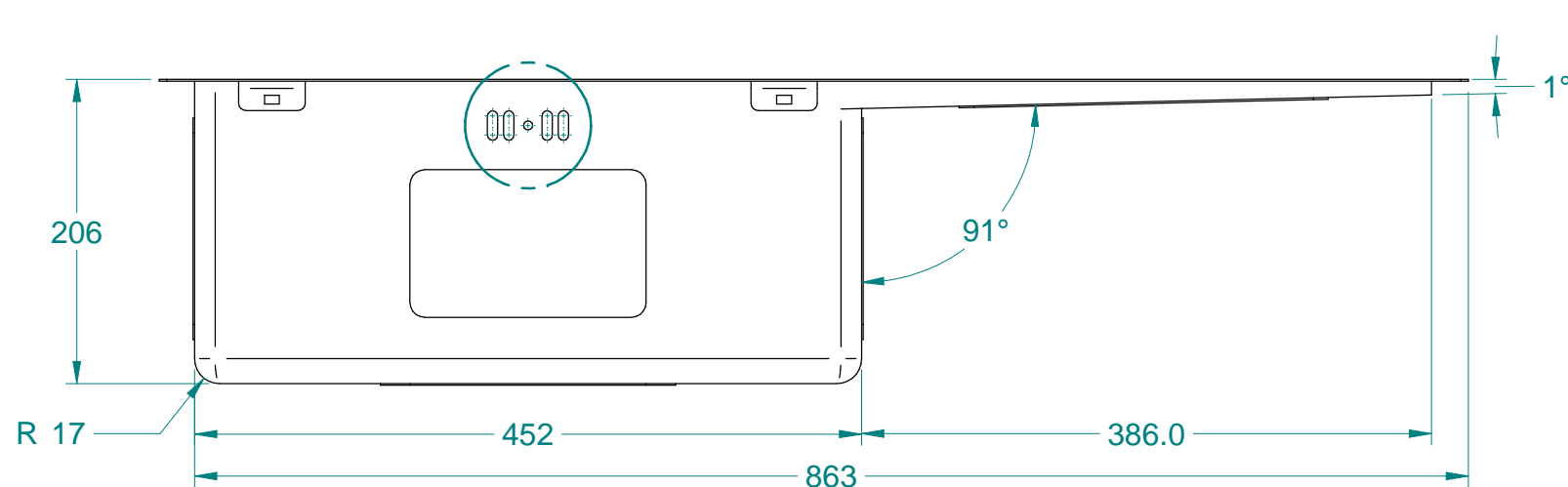
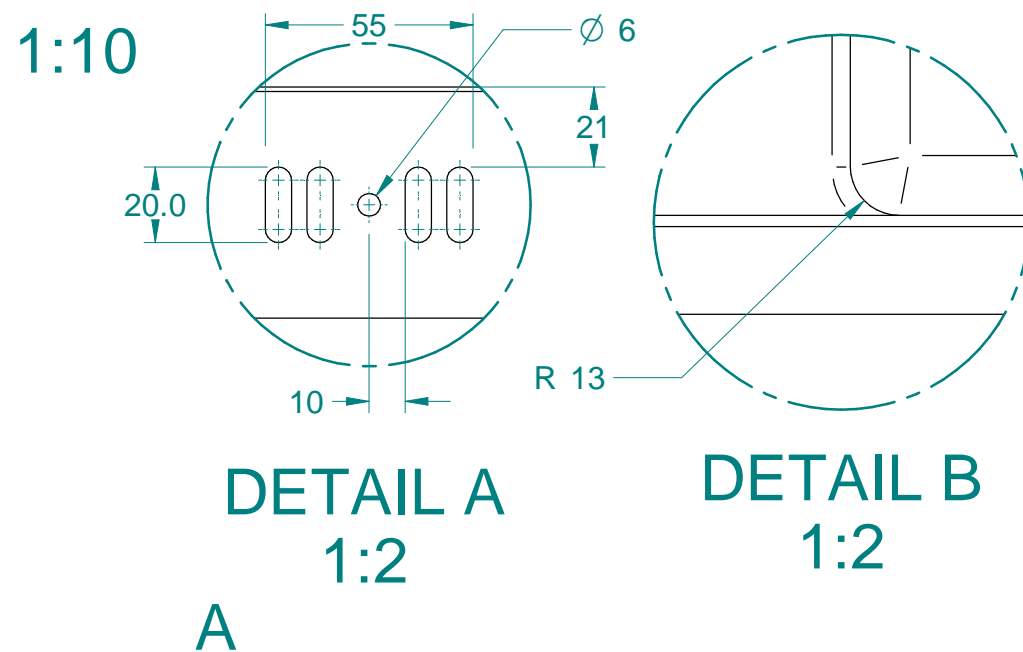
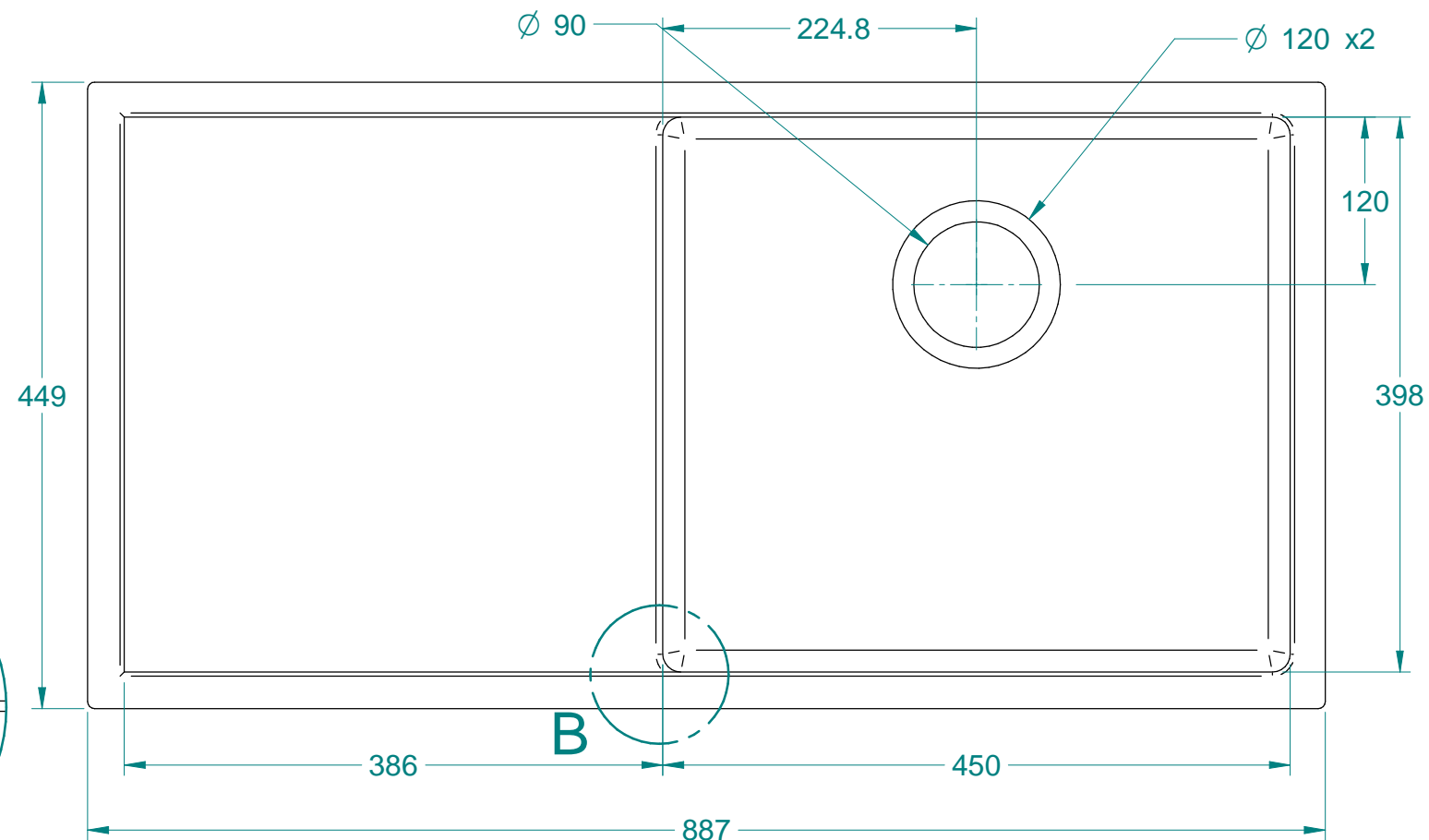
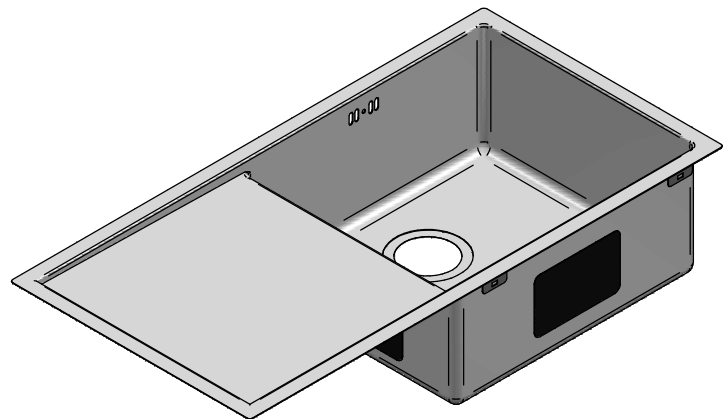
1:5




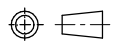
Part Number	Title	Material	Quantity
202	DV401-L Salford D+450x400	Stainless Steel, 304	1

<div><div><div>Acero[®]</div><div>www.acero.co.nz</div><div>45 Lunns Road Middleton Christchurch 8024 New Zealand</div><div>Phone: 0800 2637237</div></div></div>	Title: DV401-L Salford D+450x400				Drawn By:	MDA-DN
	Tolerances: (Unless Stated)				Drawn Date:	28 Aug 2018
	X. = ± 10.0	Material: Stainless Steel, 304	Third Angle Projection	 Size: A4	Checked By:	MDA-JB
	X.X = ± 6.0	Size: 1.2mm	All Dimensions in mm		Checked Date:	-
X.XX = ± 2.0		Finish: -	Mass: 8.48 kg	Rev: 00	Drawing No: 203	
Angles = ± 5.0°		Form: -	Sheet: 1 of 2	Status: Released		

NOTE: ALL Dimensions are Reference!



NOTE: ALL Dimensions are Reference!

 www.acero.co.nz 45 Lunns Road Middleton Christchurch 8024 New Zealand Phone: 0800 2637237	Title: DV401-L Salford D+450x400				Drawn By: MDA-DN
	Tolerances: (Unless Stated)				Drawn Date: 28 Aug 2018
	X. = ± 10.0	Material: Stainless Steel, 304	Third Angle Projection	 Size: A4	Checked By: MDA-JB
	X.X = ± 6.0	Size: 1.2mm	All Dimensions in mm		Checked Date: -
X.XX = ± 2.0		Finish: -	Mass: 8.48 kg	Rev: 00	Drawing No: 203
Angles = ± 5.0°		Form: -	Sheet: 2 of 2	Status: Released	