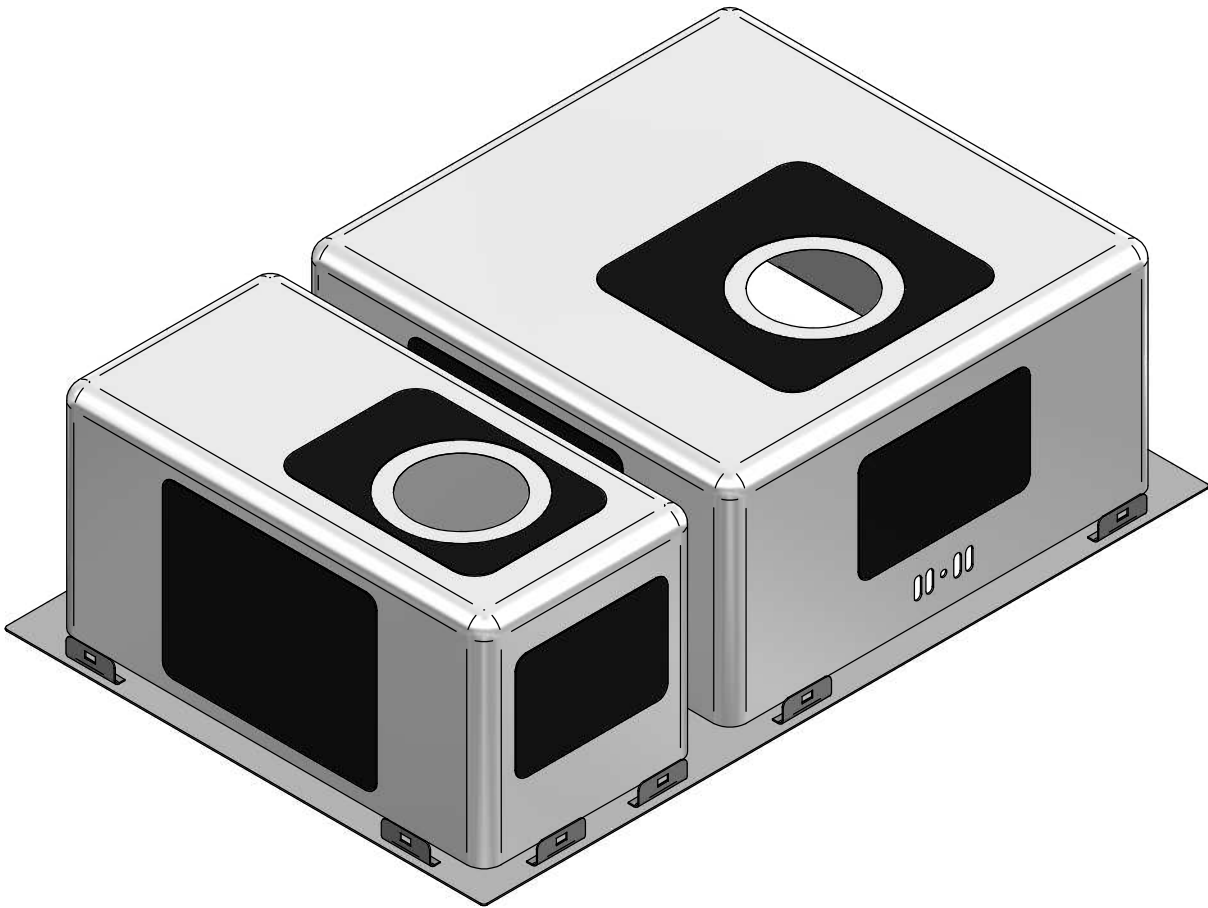
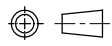


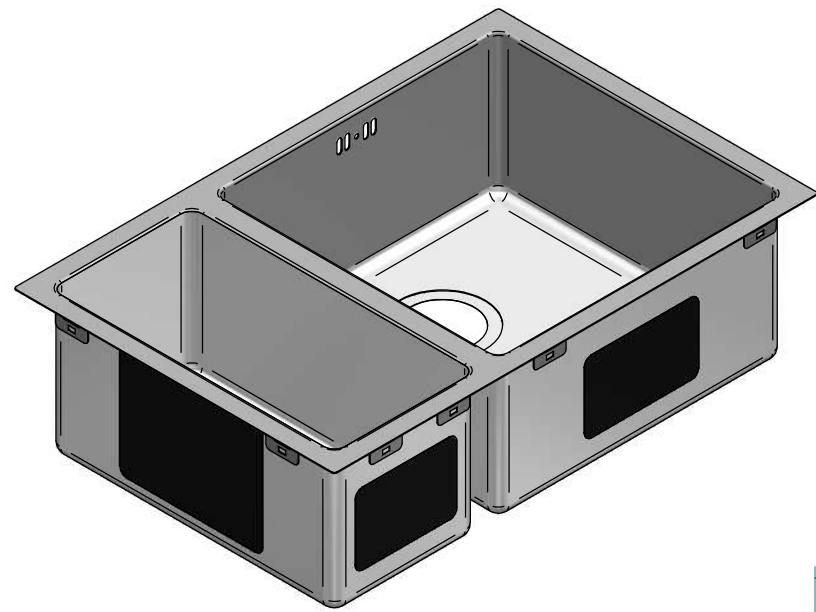
1:5



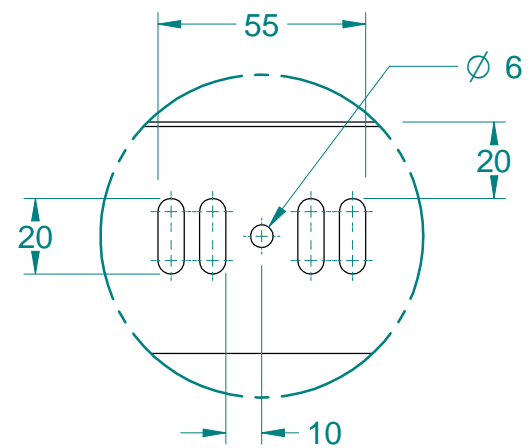
Part Number	Title	Material	Quantity
178	DV204-L, Liverpool, 200x400+400x400	Stainless Steel, 304	1

<div><div><div>Acero[®]</div><div>www.acero.co.nz</div><div>45 Lunns Road Middleton Christchurch 8024 New Zealand</div><div>Phone: 0800 2637237</div></div></div>	Title: DV204-L, Liverpool, 200x400+400x400				Drawn By:	MDA-DN
	Tolerances: (Unless Stated)				Drawn Date:	14 Feb 2018
	X. = ± 10.0	Material: Stainless Steel, 304	Third Angle Projection	 Size: A4	Checked By:	MDA-JB
	X.X = ± 6.0	Size: 1.2 mm	All Dimensions in mm		Checked Date:	-
X.XX = ± 2.0		Finish: -	Mass: 6.00 kg	Rev: 00	Drawing No: 179	
Angles = ± 5.0°		Form: -	Sheet: 1 of 2	Status: Released		

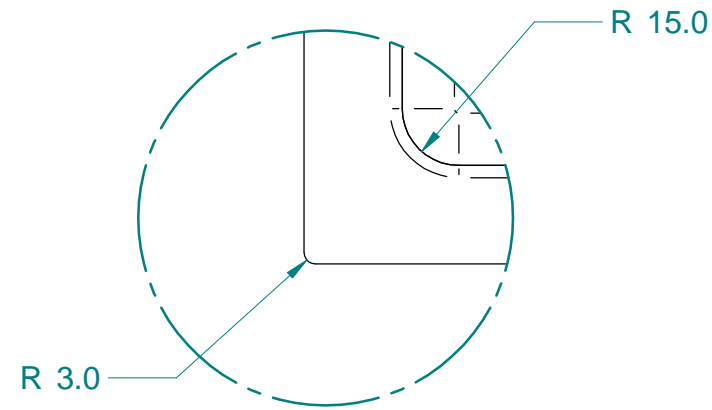
NOTE: ALL Dimensions are Reference!



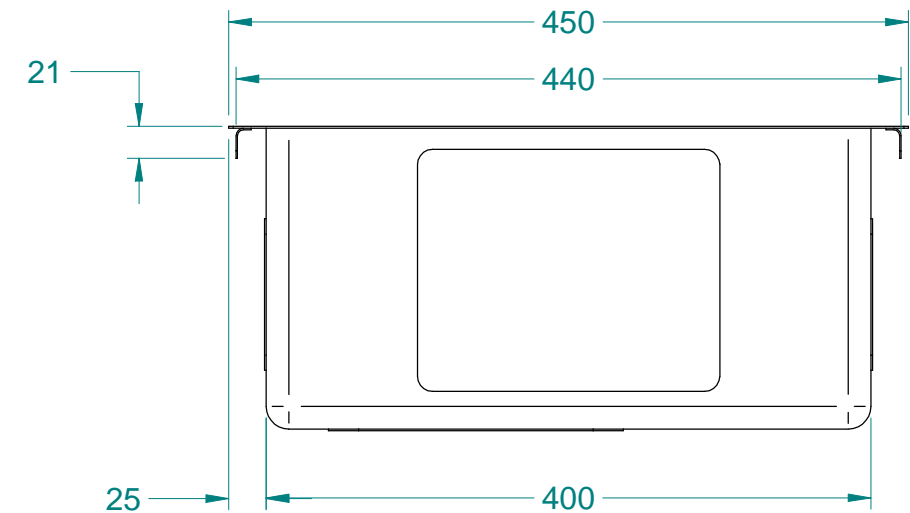
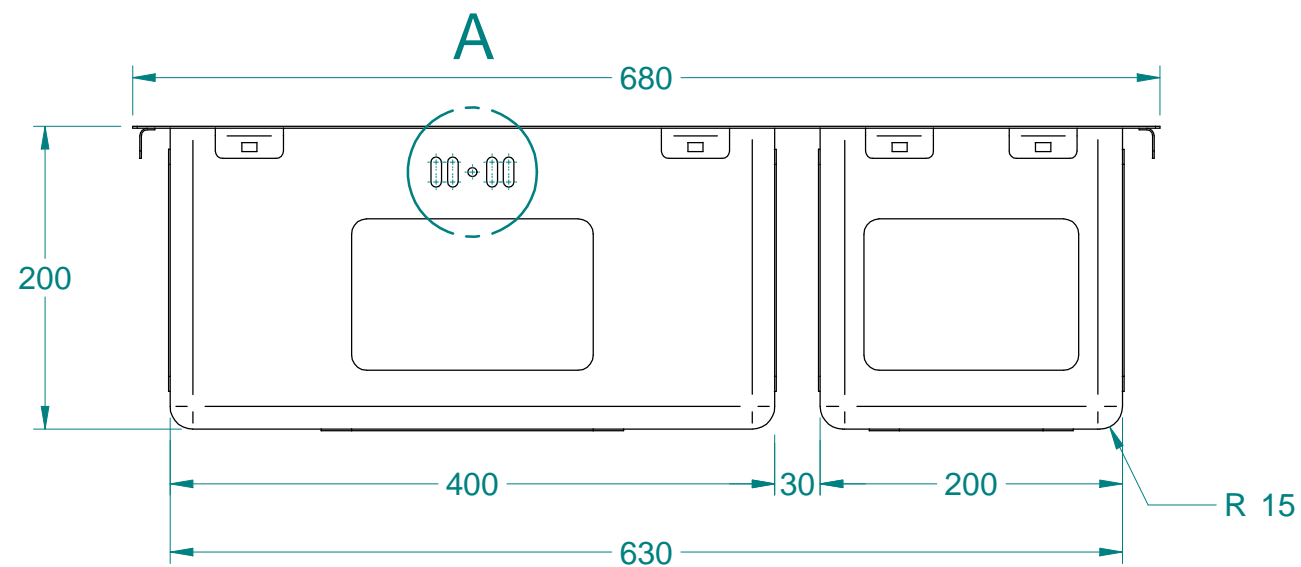
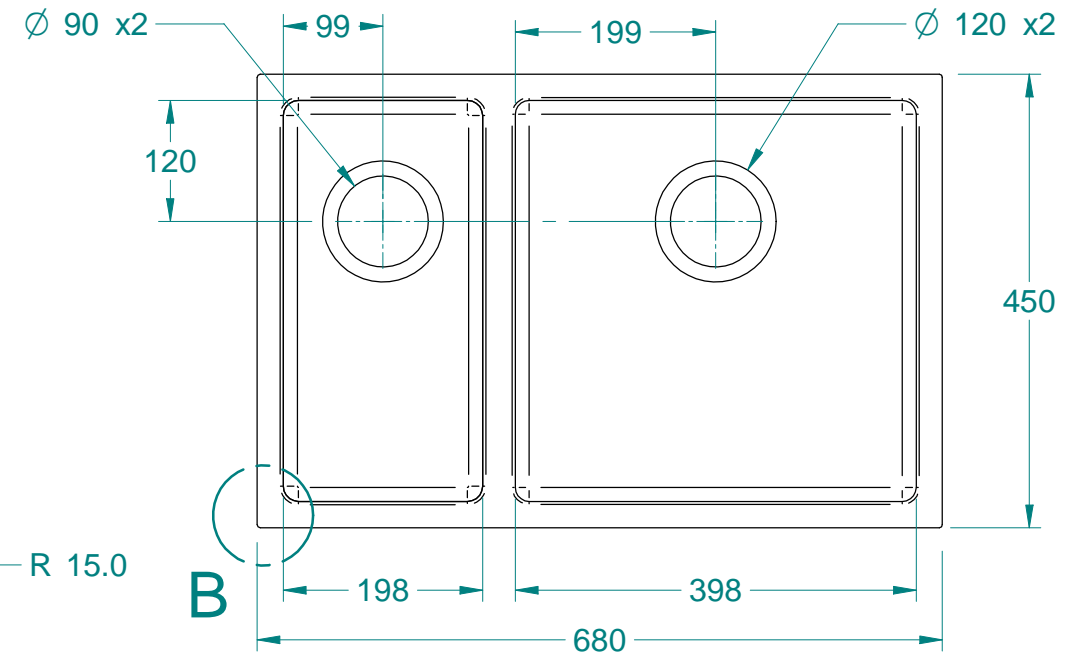
1:7.5




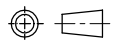
DETAIL A
1:2



DETAIL B
1:2



NOTE: ALL Dimensions are Reference!

 www.acero.co.nz 45 Lunns Road Middleton Christchurch 8024 New Zealand Phone: 0800 2637237	Title: DV204-L, Liverpool, 200x400+400x400				Drawn By:	MDA-DN
	Tolerances: (Unless Stated)				Drawn Date:	14 Feb 2018
	X. = ± 10.0	Material: Stainless Steel, 304	Third Angle Projection	 Size: A4	Checked By:	MDA-JB
	X.X = ± 6.0	Size: 1.2 mm	All Dimensions in mm		Checked Date:	-
	X.XX = ± 2.0	Finish: -	Mass: 6.00 kg	Rev: 00	Drawing No: 179	
	Angles = ± 5.0°	Form: -	Sheet: 2 of 2	Status: Released		