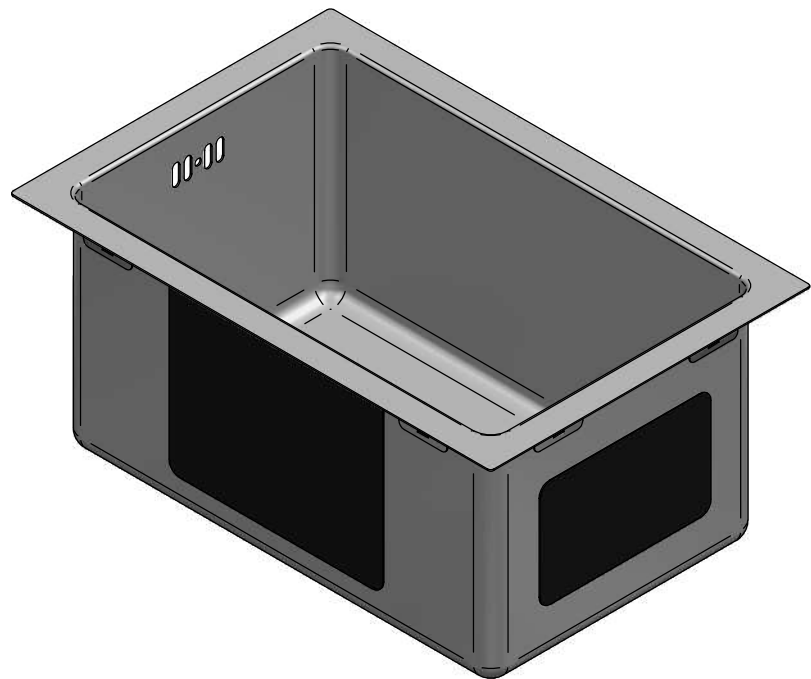
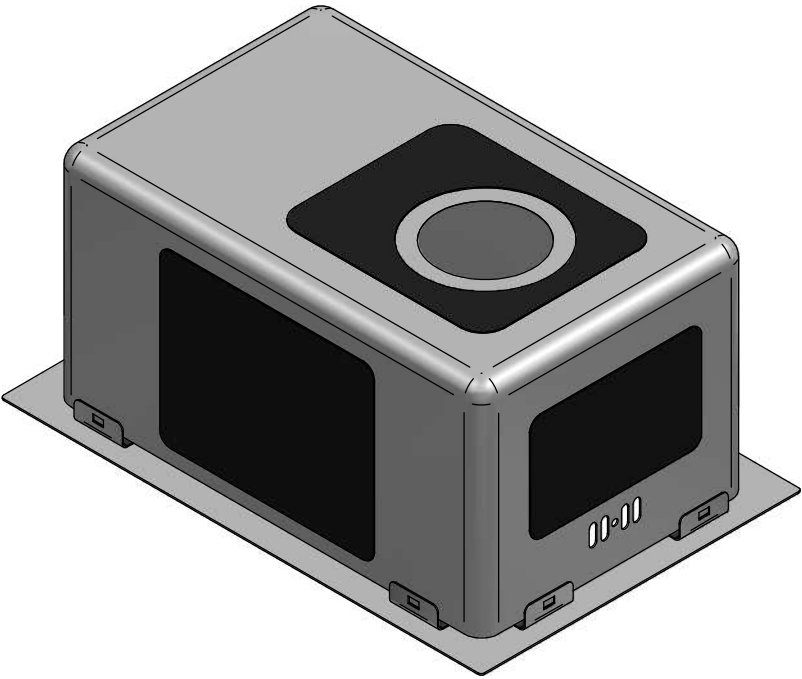


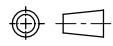
Part Number	Title	Material	Quantity
243	DV101, Mercer, DV, Newport 250x400x200	Stainless Steel, 304	1

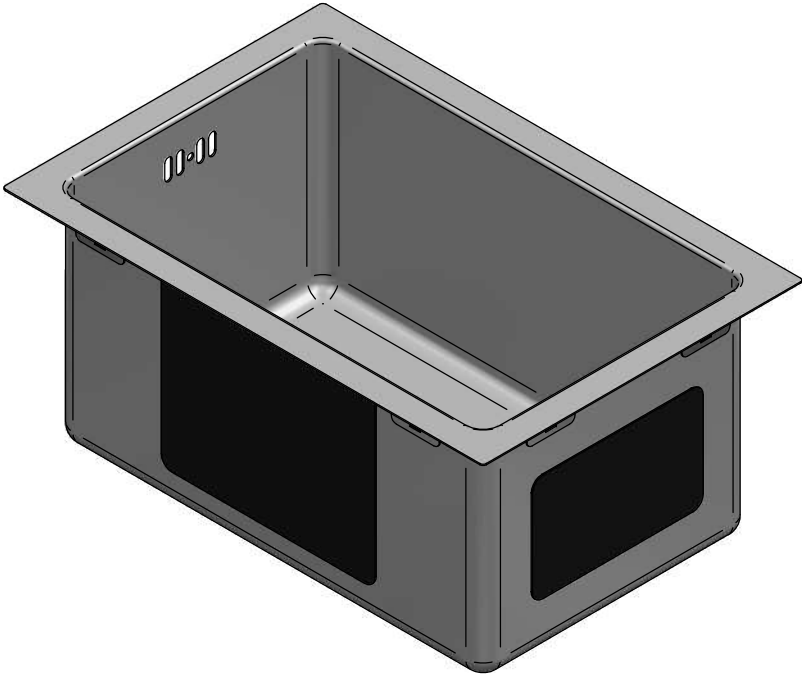


1:5

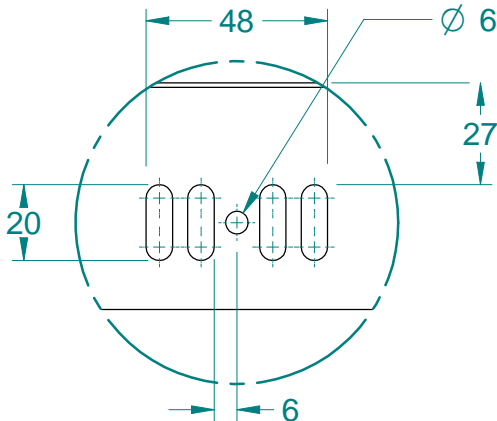


NOTE: ALL Dimensions are Reference!

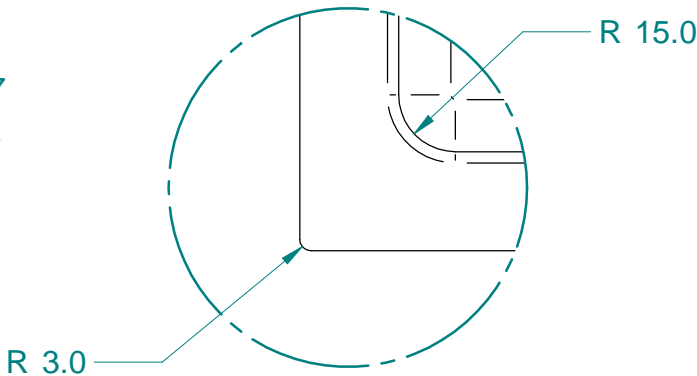
<div><div><div>Acero[®]</div><div>www.acero.co.nz</div><div>45 Lunns Road Middleton Christchurch 8024 New Zealand</div><div>Phone: 0800 2637237</div></div></div>	Title: DV101, Mercer, DV, Newport 250x400x200				Drawn By:	MDA-DN
	Tolerances: (Unless Stated)				Drawn Date:	08 Feb 2018
	X. = ± 10.0	Material: Stainless Steel, 304	Third Angle Projection	 Size: A4	Checked By:	MDA-JB
	X.X = ± 6.0	Size: 1.2 mm	All Dimensions in mm		Checked Date:	-
X.XX = ± 2.0		Finish: -	Mass: 4.59 kg	Rev: 00	Drawing No: 072	
Angles = ± 5.0°		Form: -	Sheet: 1 of 2	Status: Released		



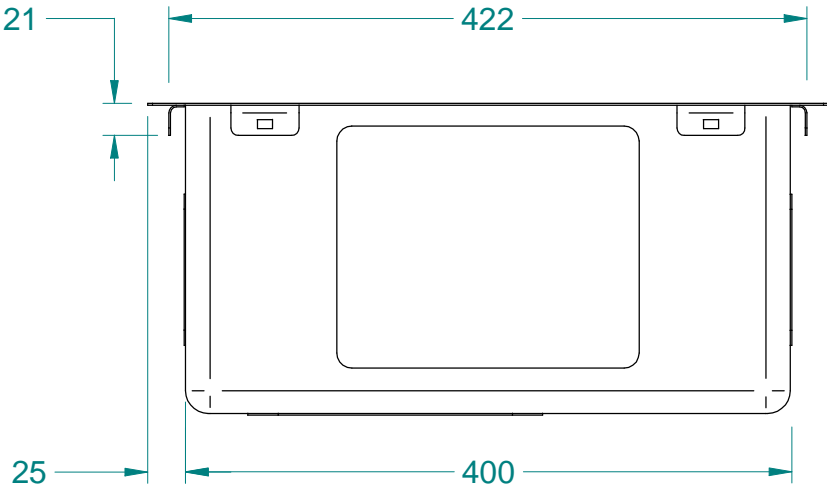
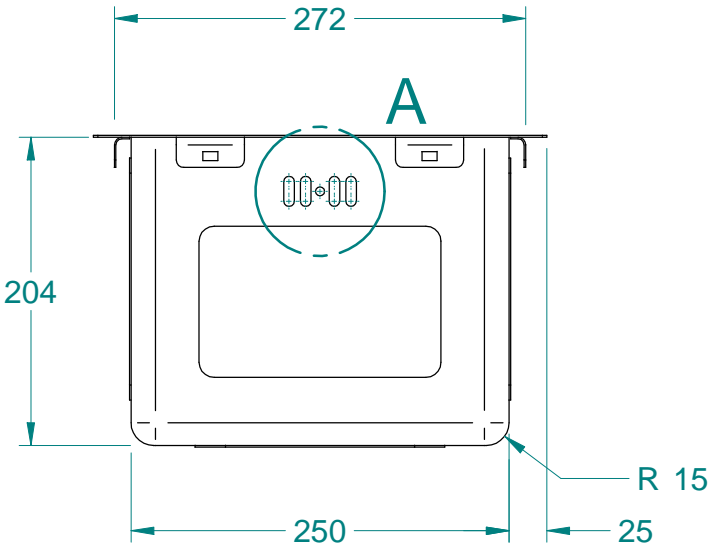
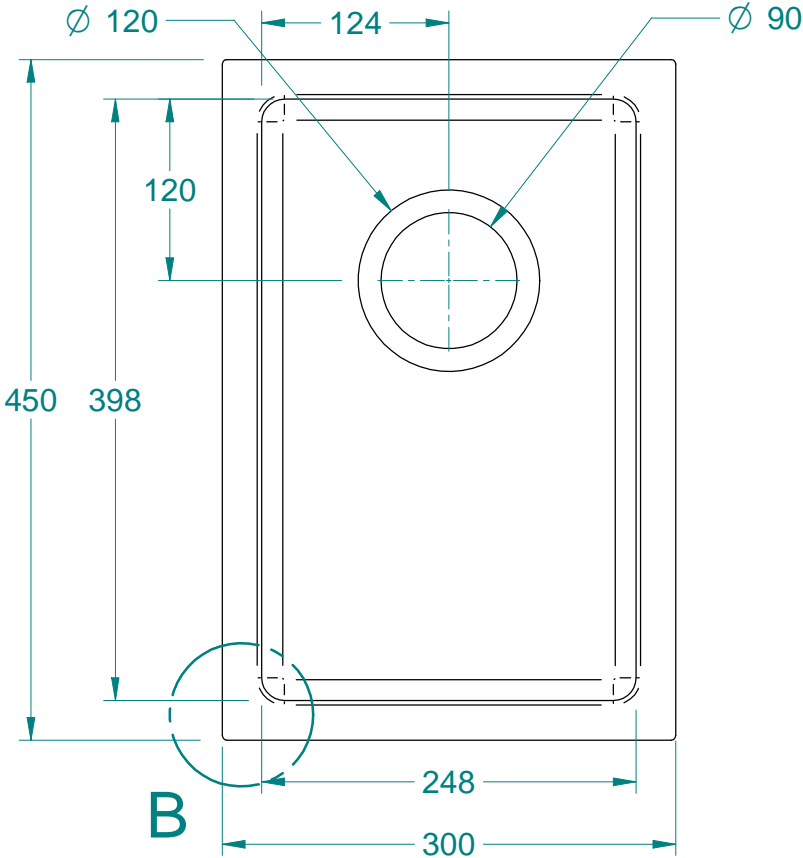
1:5




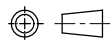
DETAIL A
1:2



DETAIL B
1:2



NOTE: ALL Dimensions are Reference!

 www.acero.co.nz 45 Lunns Road Middleton Christchurch 8024 New Zealand Phone: 0800 2637237	Title: DV101, Mercer, DV, Newport 250x400x200				Drawn By:	MDA-DN
	Tolerances: (Unless Stated)				Drawn Date:	08 Feb 2018
	X. = ± 10.0	Material: Stainless Steel, 304	Third Angle Projection	 Size: A4	Checked By:	MDA-JB
	X.X = ± 6.0	Size: 1.2 mm	All Dimensions in mm		Checked Date:	-
X.XX = ± 2.0		Finish: -	Mass: 4.59 kg	Rev: 00	Drawing No: 072	
Angles = ± 5.0°		Form: -	Sheet: 2 of 2	Status: Released		