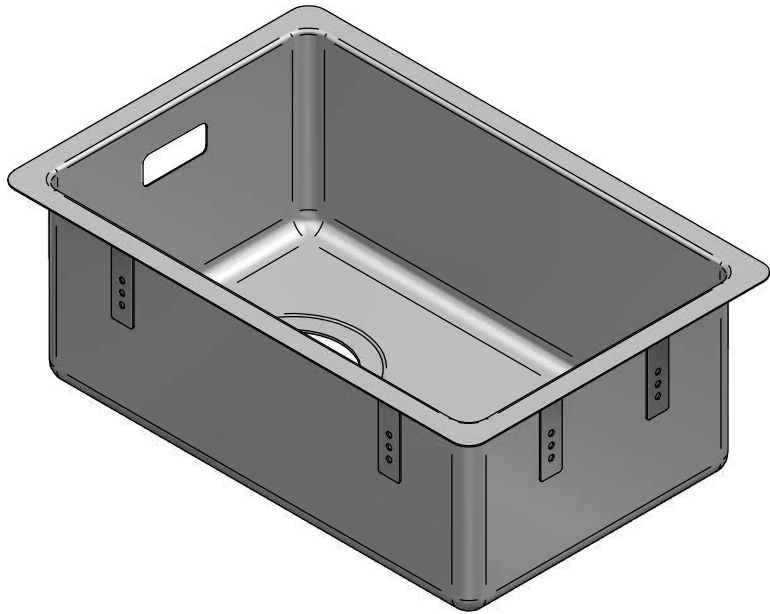
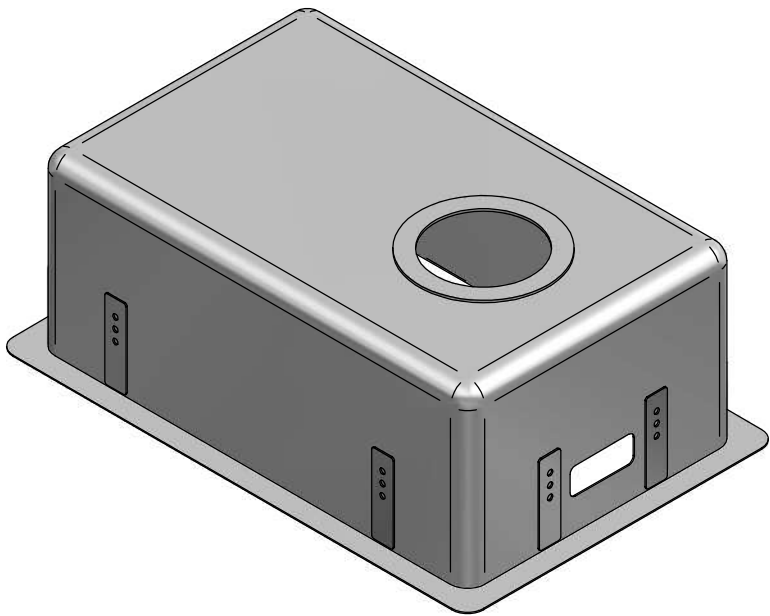


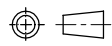
Part Number	Title	Material	Quantity
156	DC103R-T9N4, Mercer , 400x250x160	Stainless Steel, 304	1

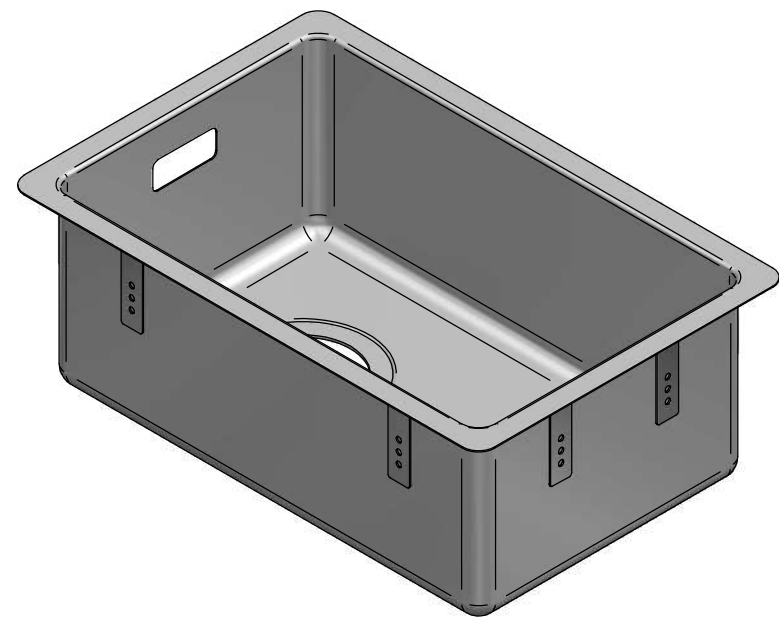


1:5

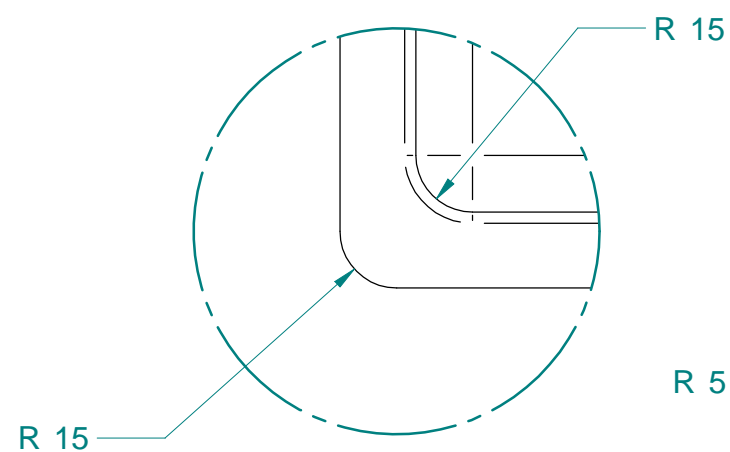


NOTE: ALL Dimensions are Reference!

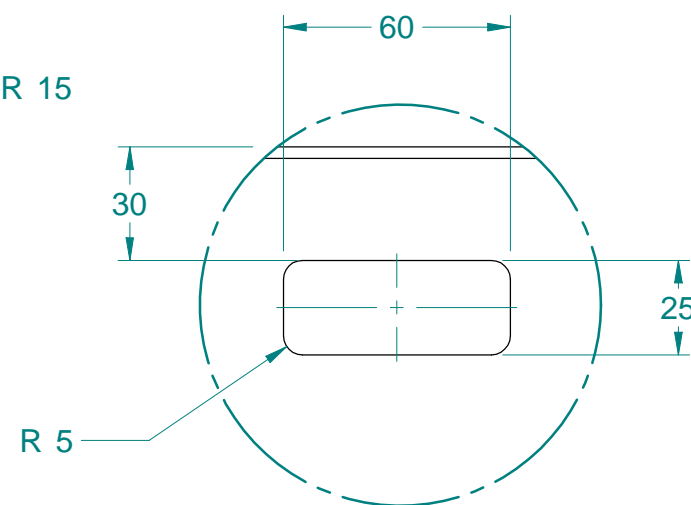
<div>Acero[®]</div> <div>www.acero.co.nz</div> <div>45 Lunns Road Middleton Christchurch 8024 New Zealand</div> <div>Phone: 0800 2637237</div>	Title: DC103R-T9NO4, Mercer, 400x250x160				Drawn By:	MDA-DN
	Tolerances: (Unless Stated)				Drawn Date:	02 Oct 2017
	X. = ± 2.0	Material: Stainless Steel, 304	Third Angle Projection	 Size: A4	Checked By:	-
	X.X = ± 1.0	Size: 1.0 mm	All Dimensions in mm		Checked Date:	-
	X.XX = ± 0.5	Finish: -	Mass: 2.66 kg	Rev: 01	Drawing No: 157	
Angles = ± 1.0°		Form: -	Sheet: 1 of 2	Status Released		



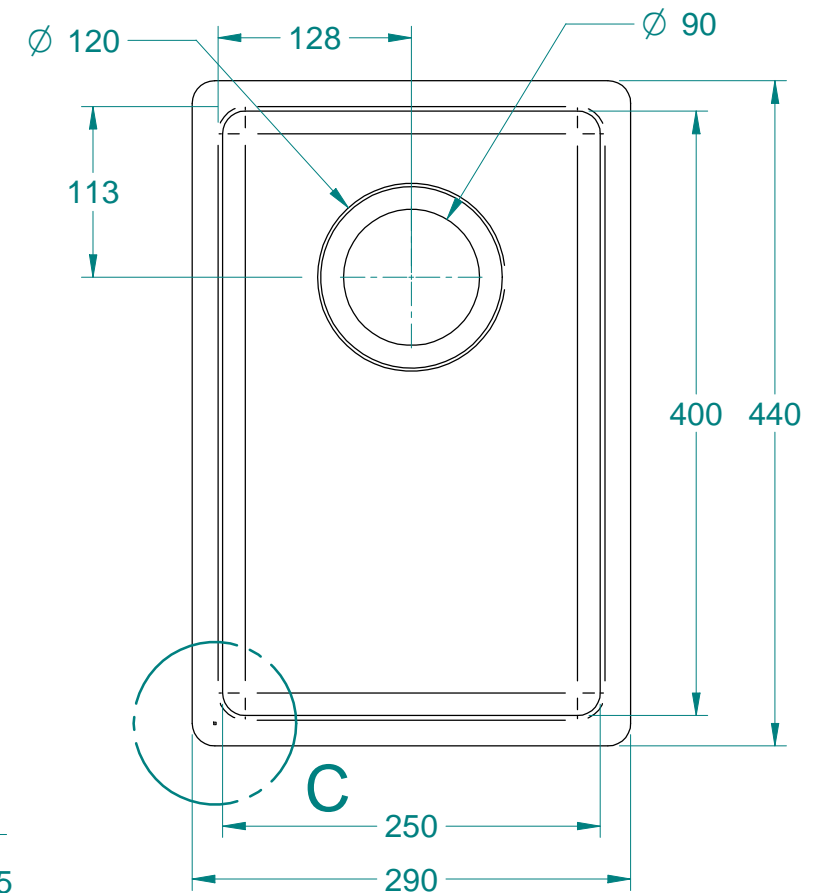
1:5



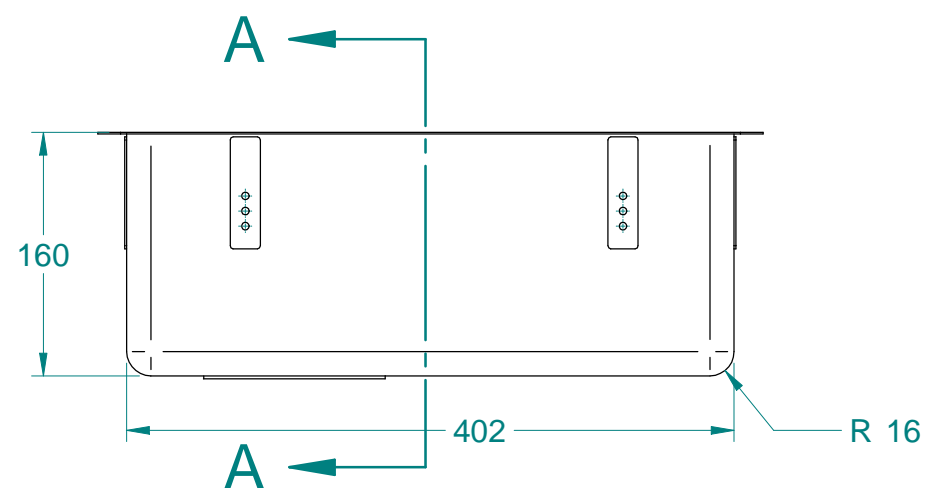
DETAIL C
1:2



DETAIL B
1:2

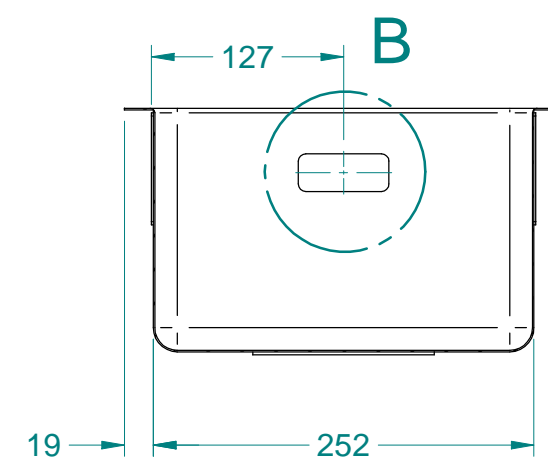


C



A


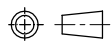
A



B

SECTION A-A

NOTE: ALL Dimensions are Reference!

 <p>www.acero.co.nz</p> <p>45 Lunns Road Middleton Christchurch 8024 New Zealand</p> <p>Phone: 0800 2637237</p>	Title: DC103R-T9NO4, Mercer, 400x250x160				Drawn By: MDA-DN
	Tolerances: (Unless Stated)				Drawn Date: 02 Oct 2017
	X. = ± 2.0	Material: Stainless Steel, 304	Third Angle Projection	 <p>Size: A4</p>	Checked By: -
	X.X = ± 1.0	Size: 1.0 mm	All Dimensions in mm		Checked Date: -
	X.XX = ± 0.5	Finish: -	Mass: 2.66 kg	Rev: 01	Drawing No: 157
	Angles = ± 1.0°	Form: -	Sheet: 2 of 2	Status Released	