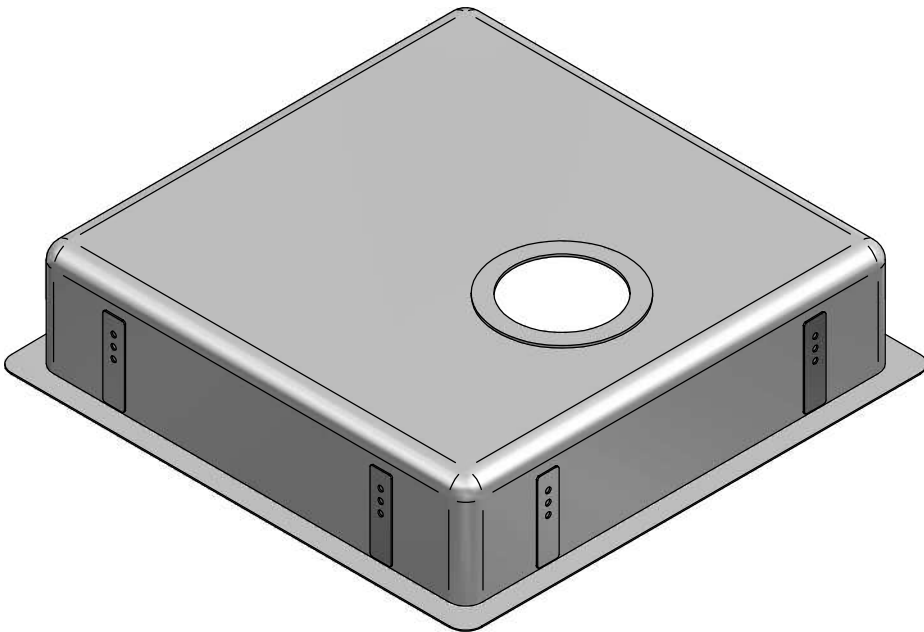
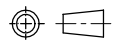


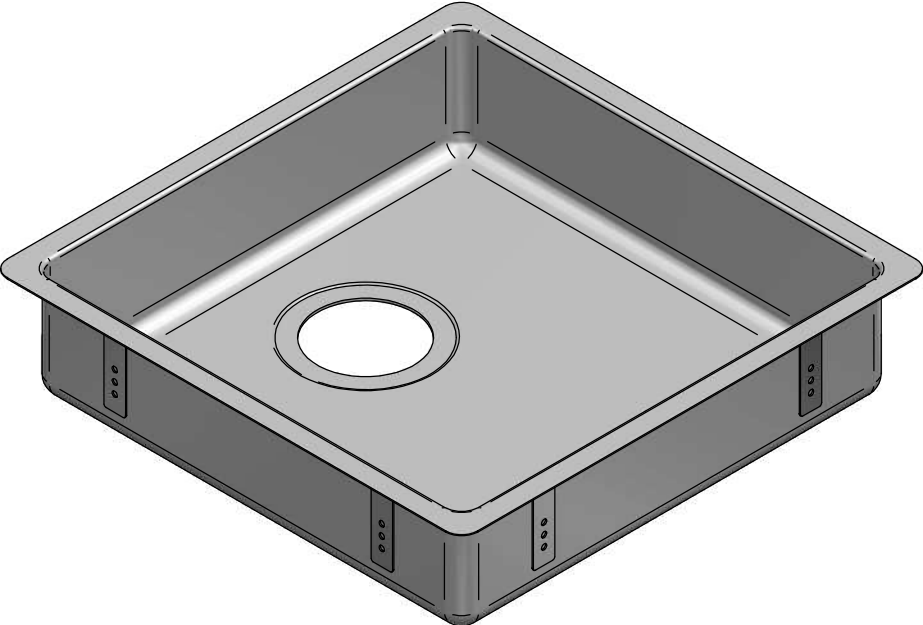
1:5



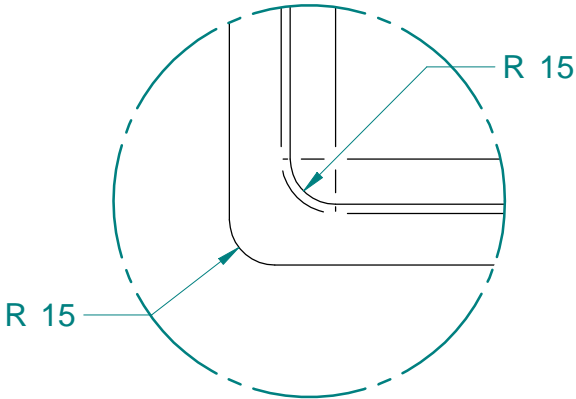
Part Number	Title	Material	Quantity
150	DC102R-T9N4, Mercer, 400x400x100	Stainless Steel, 304	1

<div><div><div>Acero[®]</div><div>www.acero.co.nz</div><div>45 Lunns Road Middleton Christchurch 8024 New Zealand</div><div>Phone: 0800 2637237</div></div></div>	Title: DC102R-T9N4, Mercer, 400x400x100				Drawn By:	MDA-DN
	Tolerances: (Unless Stated)				Drawn Date:	02 Oct 2017
	X. = ± 2.0	Material: Stainless Steel, 304	Third Angle Projection	 Size: A4	Checked By:	-
	X.X = ± 1.0	Size: 1.0 mm	All Dimensions in mm		Checked Date:	-
	X.XX = ± 0.5	Finish: -	Mass: 2.81 kg	Rev: 01	Drawing No: 151	
	Angles = ± 1.0°	Form: -	Sheet: 1 of 2	Status: Released		

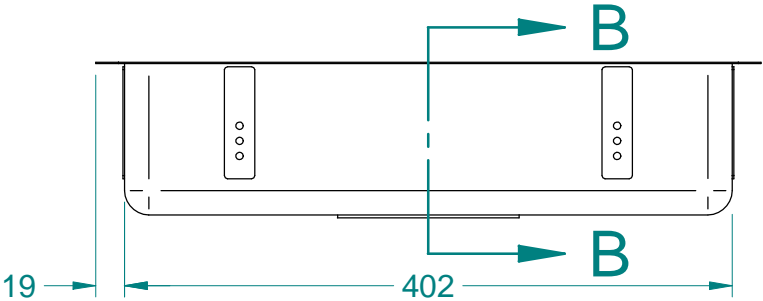
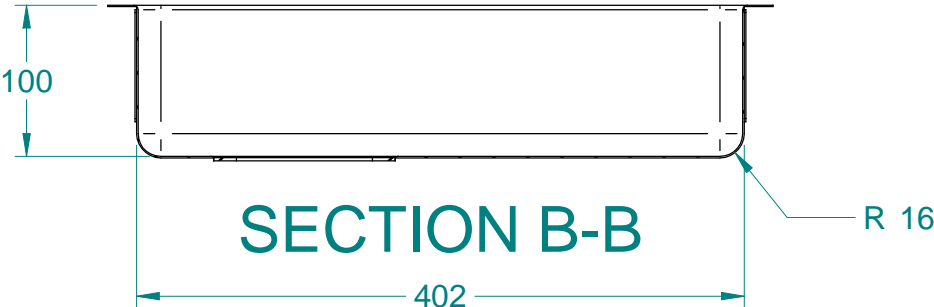
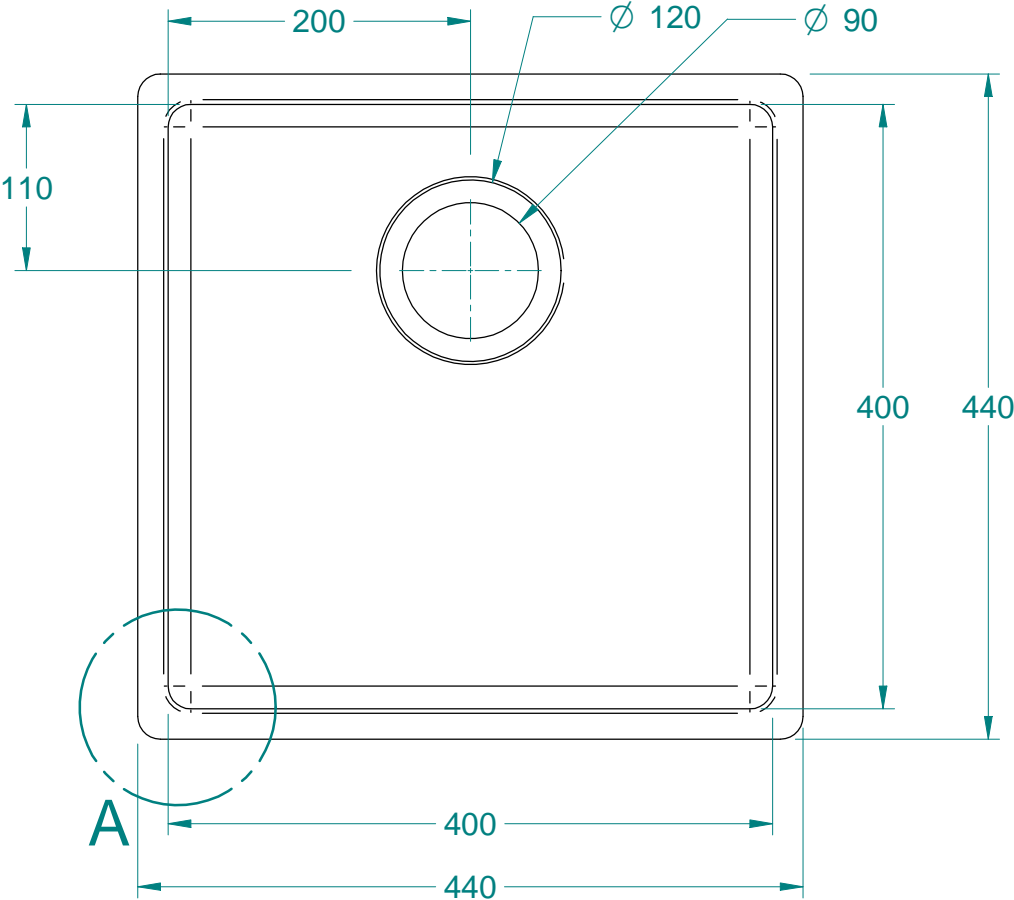
NOTE: ALL Dimensions are Reference!




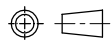
1:5



DETAIL A
1:2.5



NOTE: ALL Dimensions are Reference!

 www.acero.co.nz 45 Lunns Road Middleton Christchurch 8024 New Zealand Phone: 0800 2637237	Title: DC102R-T9N4, Mercer, 400x400x100				Drawn By: MDA-DN
	Tolerances: (Unless Stated)				Drawn Date: 02 Oct 2017
	X. = ± 2.0	Material: Stainless Steel, 304	Third Angle Projection	 Size: A4	Checked By: -
	X.X = ± 1.0	Size: 1.0 mm	All Dimensions in mm		Checked Date: -
X.XX = ± 0.5		Finish: -	Mass: 2.81 kg	Rev: 01	Drawing No: 151
Angles = ± 1.0°		Form: -	Sheet: 2 of 2	Status: Released	