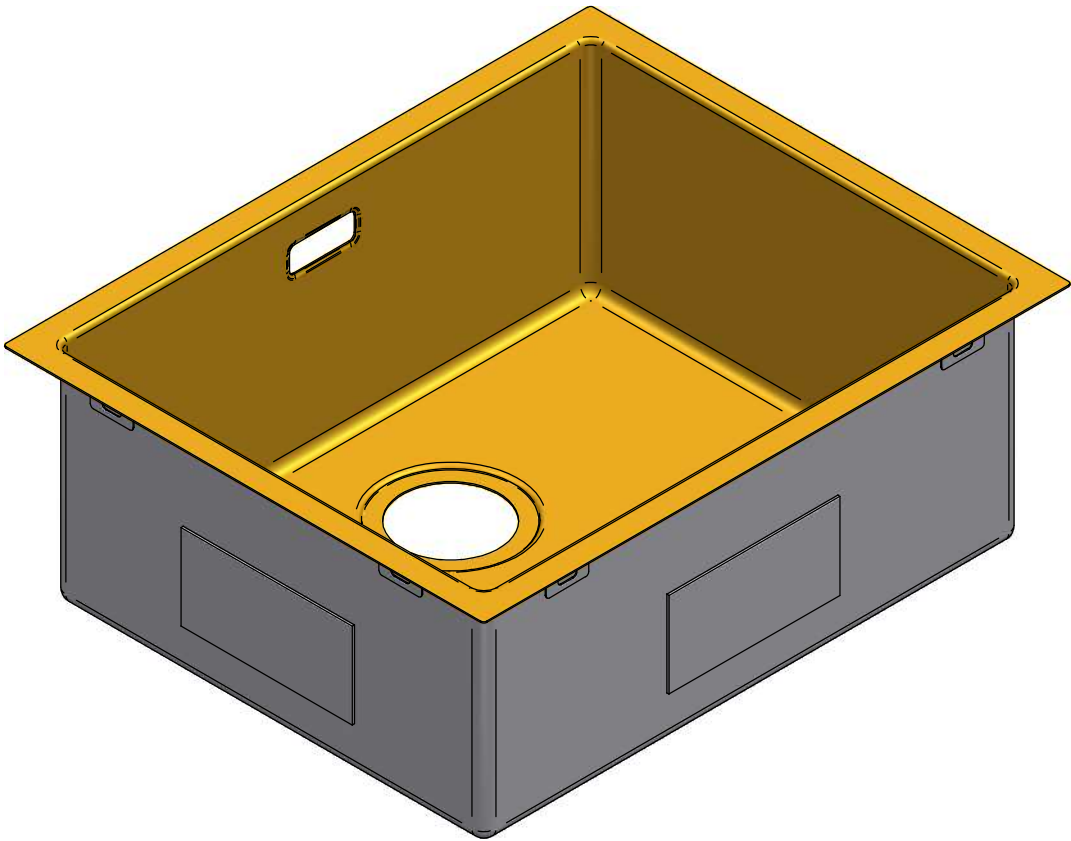
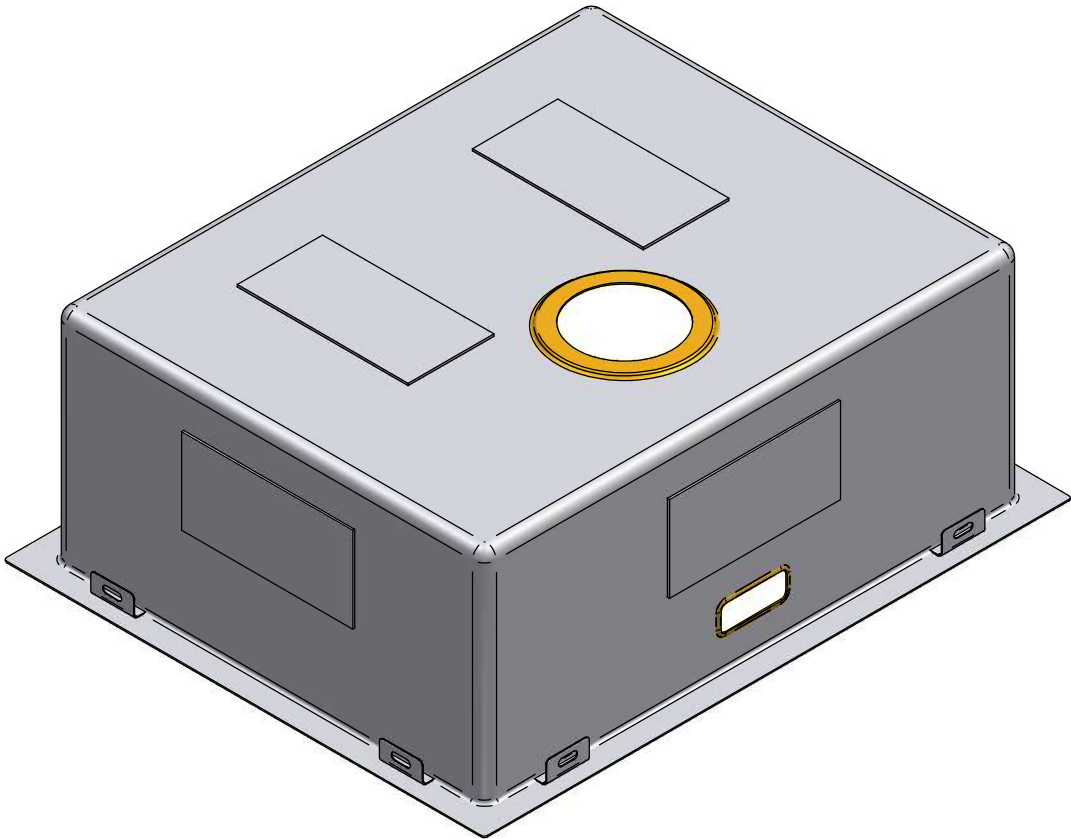


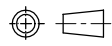
Part Number	Title	Material	Quantity
425	AA503, Brass (500x400x200)	Stainless Steel, 304	1

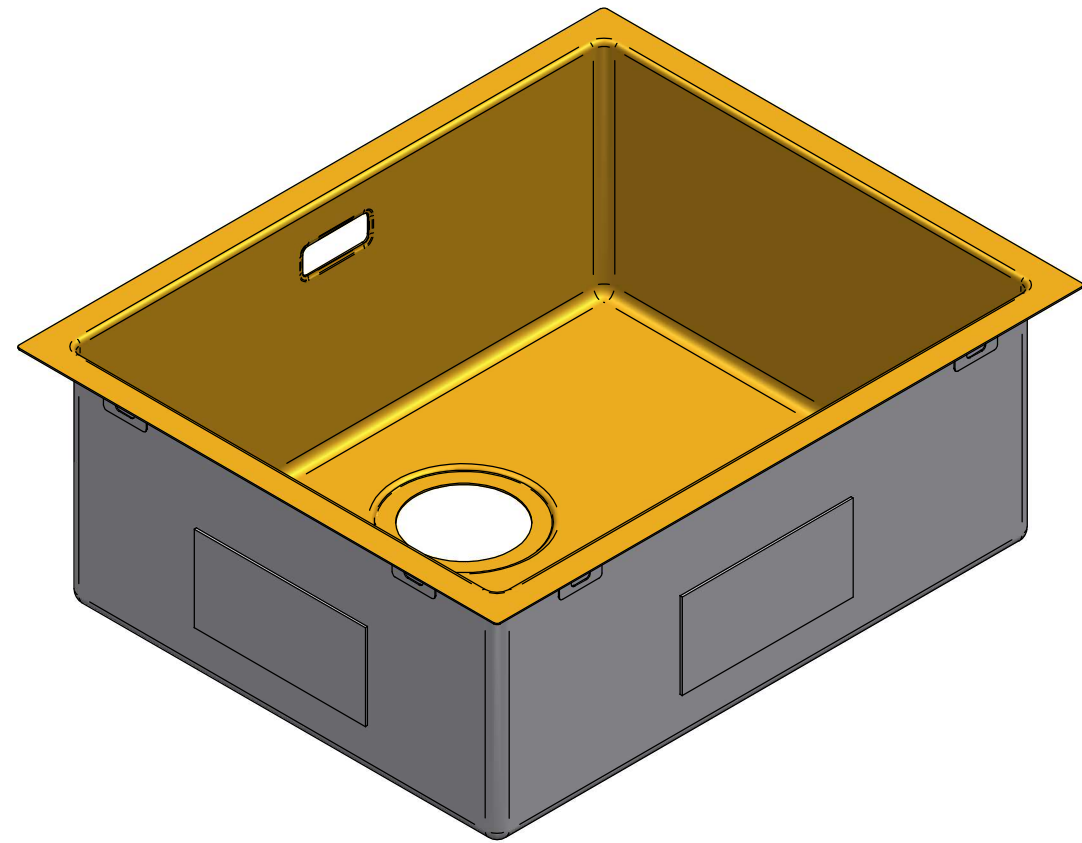


1:5

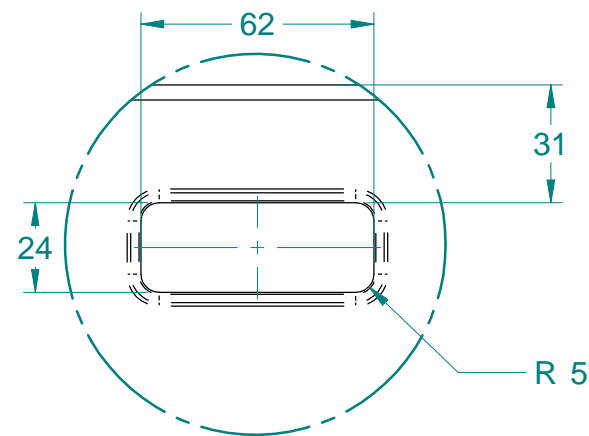


NOTE: ALL Dimensions are Reference!

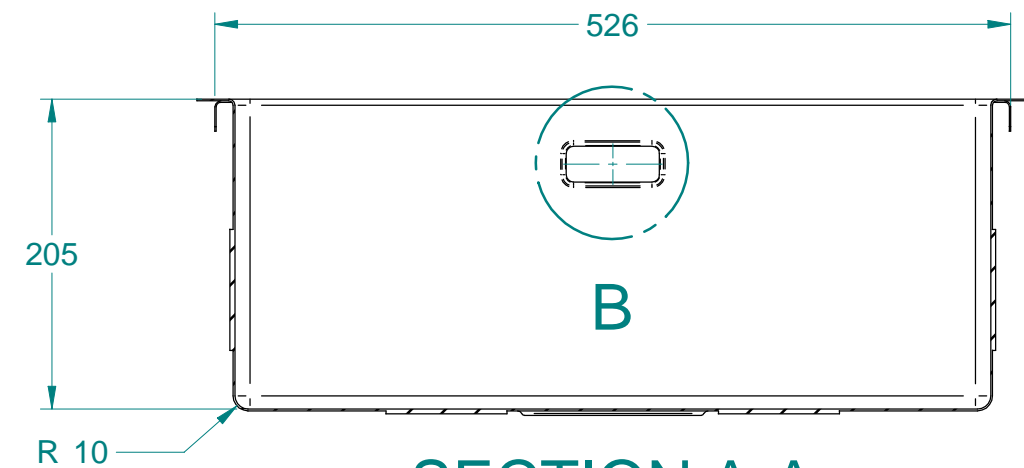
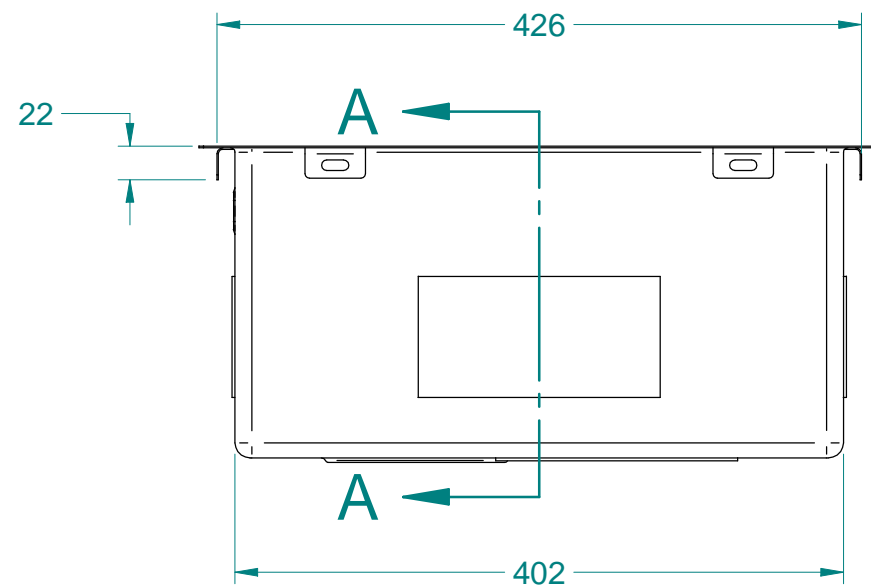
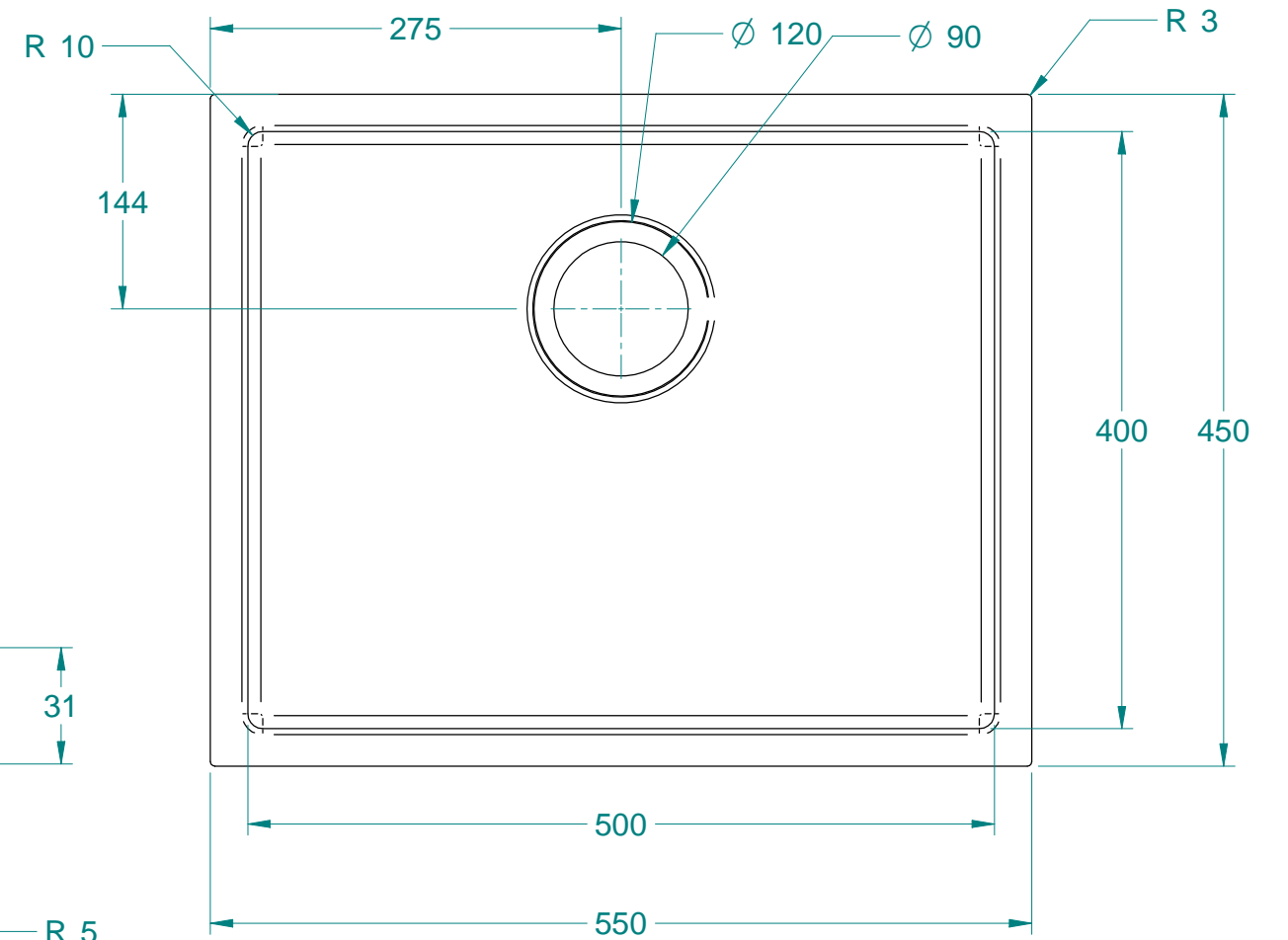
<div>Acero<sup>®</sup></div> <div>www.acero.co.nz</div> <div>45 Lunns Road Middleton Christchurch 8024 New Zealand</div> <div>Phone: 0800 2637237</div>	Title: AA503, Brass (500x400x200)				Drawn By:	MDA-DN
	Tolerances: (Unless Stated)				Drawn Date:	05 Dec 2017
	X. = ± 2.0	Material: Stainless Steel, 304	Third Angle Projection	 Size: A4	Checked By:	-
	X.X = ± 1.0	Size: 1.2mm	All Dimensions in mm		Checked Date:	-
X.XX = ± 0.5		Finish: Brass	Mass: 7.04 kg	Rev: 01	Drawing No: 426	
Angles = ± 1.0°		Form: -	Sheet: 1 of 2	Status: RELEASED		



1:5


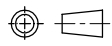


DETAIL B  
1:2



SECTION A-A

NOTE: ALL Dimensions are Reference!

 <a href="http://www.acero.co.nz">www.acero.co.nz</a> 45 Lunns Road Middleton Christchurch 8024 New Zealand Phone: 0800 2637237	Title: AA503, Brass (500x400x200)				Drawn By:	MDA-DN
	Tolerances: (Unless Stated)				Drawn Date:	05 Dec 2017
	X. = ± 2.0	Material: Stainless Steel, 304	Third Angle Projection	 Size: A4	Checked By:	-
	X.X = ± 1.0	Size: 1.2mm	All Dimensions in mm		Checked Date:	-
	X.XX = ± 0.5	Finish: Brass	Mass: 7.04 kg	Rev: 01	Drawing No: 426	
	Angles = ± 1.0°	Form: -	Sheet: 2 of 2	Status: RELEASED		