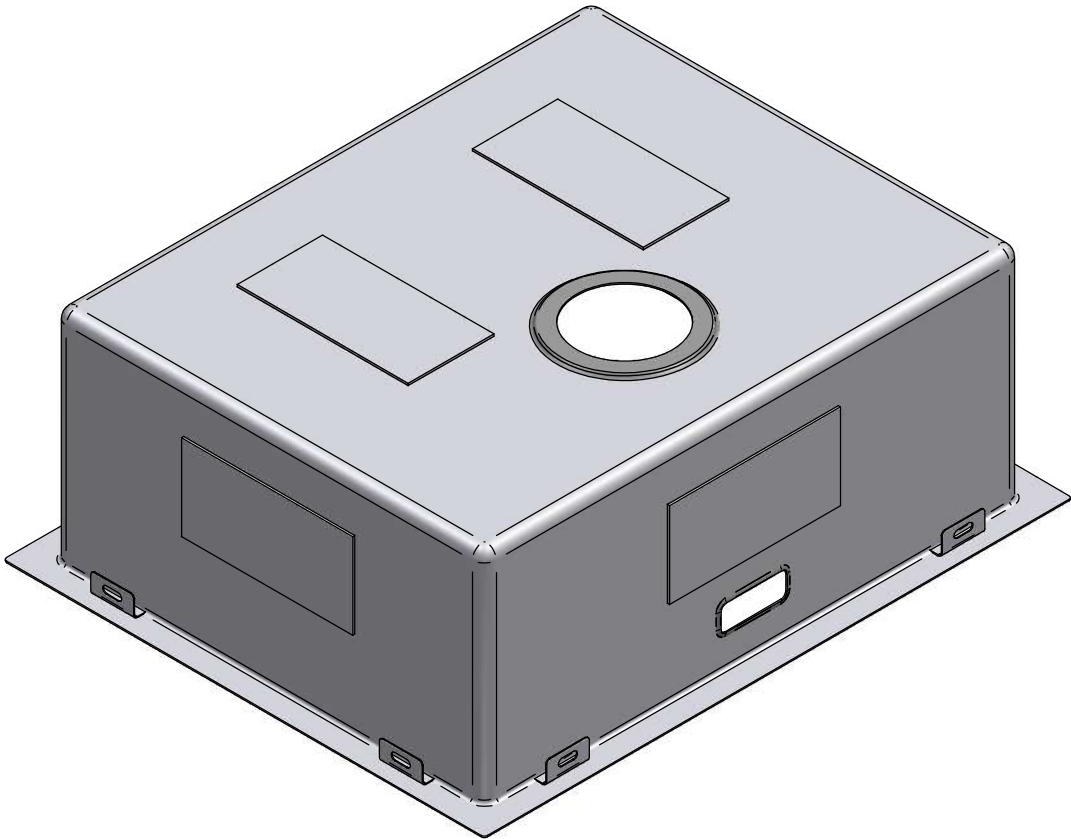
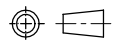


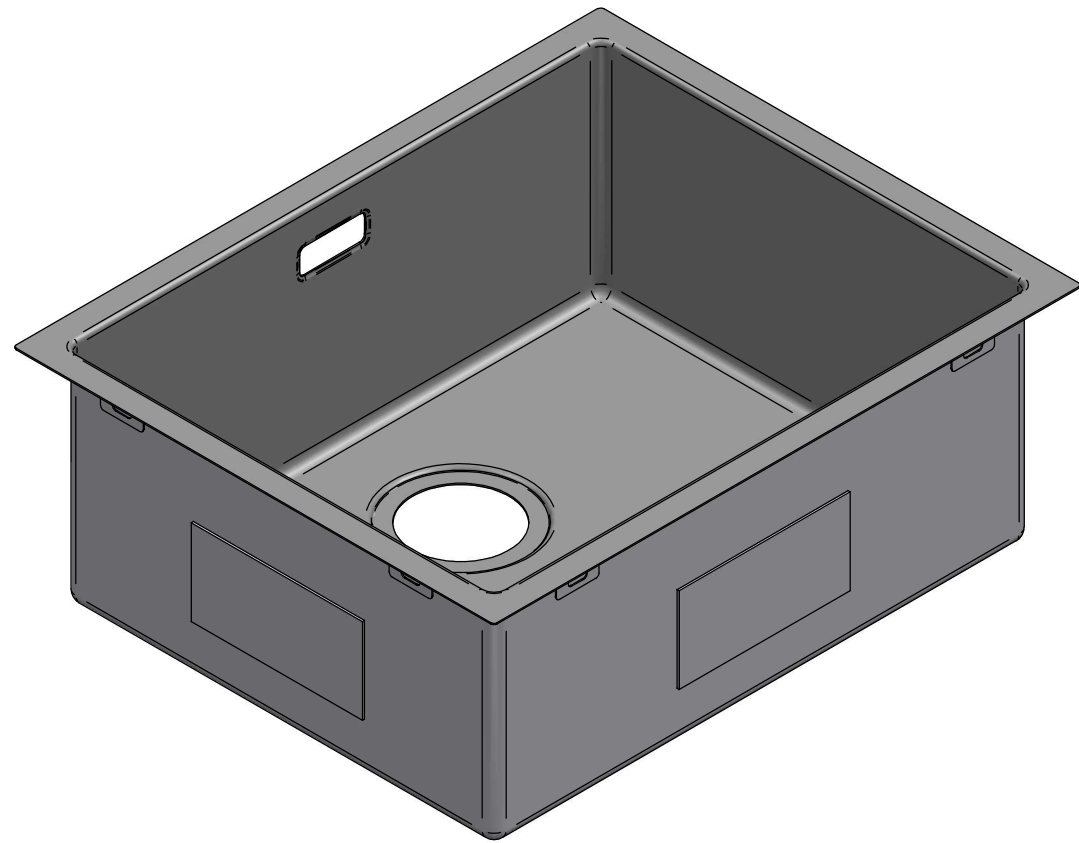
1:5

Part Number	Title	Material	Quantity
429	AA502, Gunmetal (500x400x200)	Stainless Steel, 304	1

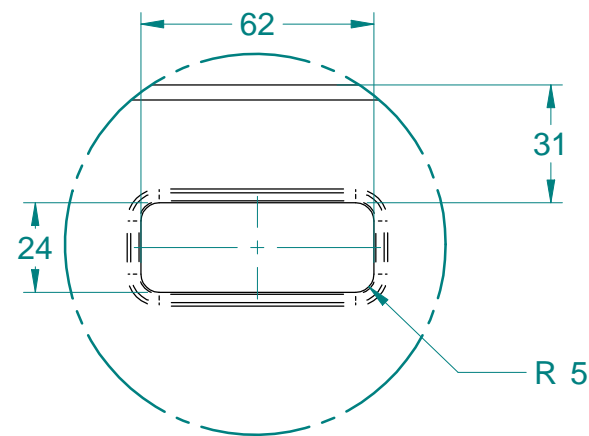


<div><div>Acero[®]</div><div>www.acero.co.nz</div><div>45 Lunns Road Middleton Christchurch 8024 New Zealand</div><div>Phone: 0800 2637237</div></div>	Title: AA502, Gunmetal (500x400x200)				Drawn By:	MDA-DN
	Tolerances: (Unless Stated)				Drawn Date:	05 Dec 2017
	X. = ± 2.0	Material: Stainless Steel, 304	Third Angle Projection	 Size: A4	Checked By:	-
	X.X = ± 1.0	Size: 1.2mm	All Dimensions in mm		Checked Date:	-
X.XX = ± 0.5		Finish: Gunmetal	Mass: 7.04 kg	Rev: 01	Drawing No: 430	
Angles = ± 1.0°		Form: -	Sheet: 1 of 2	Status: Released		

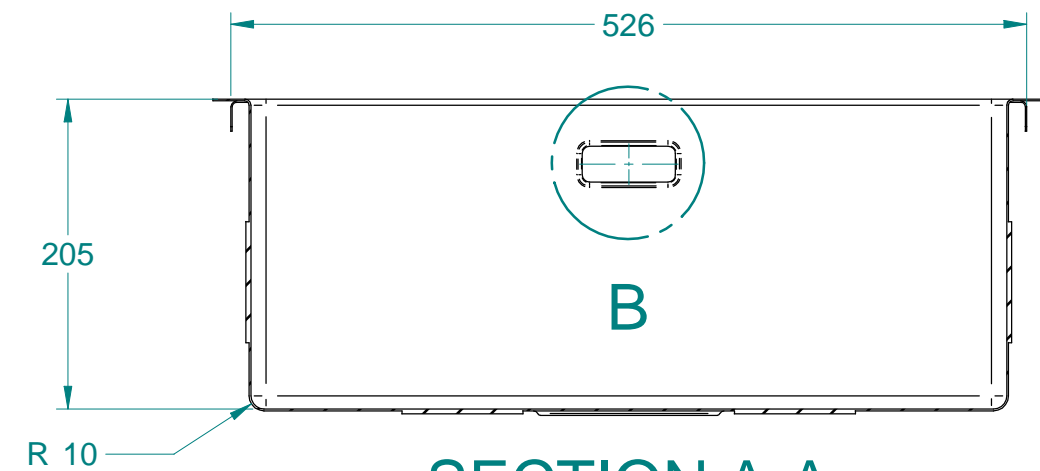
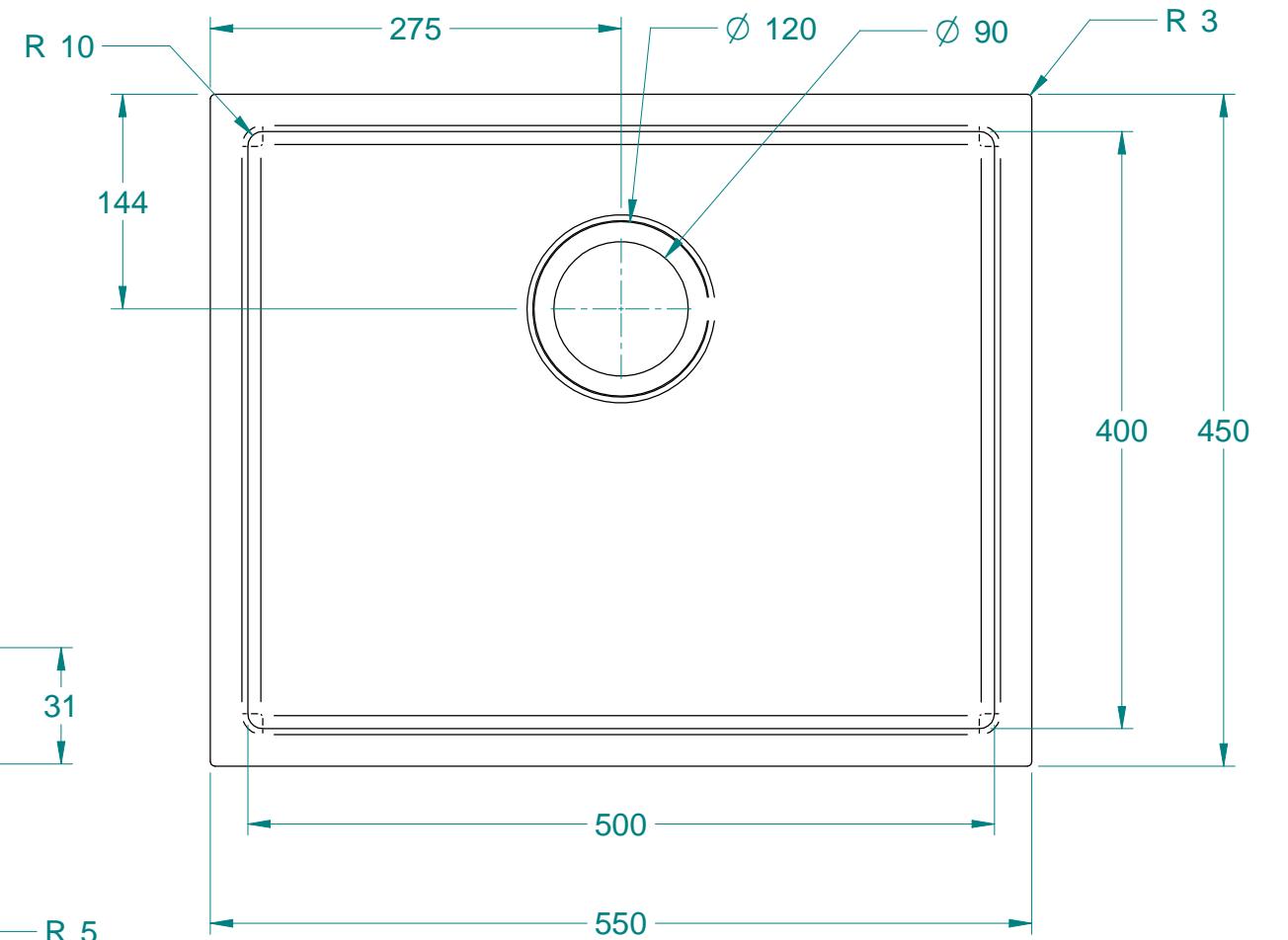
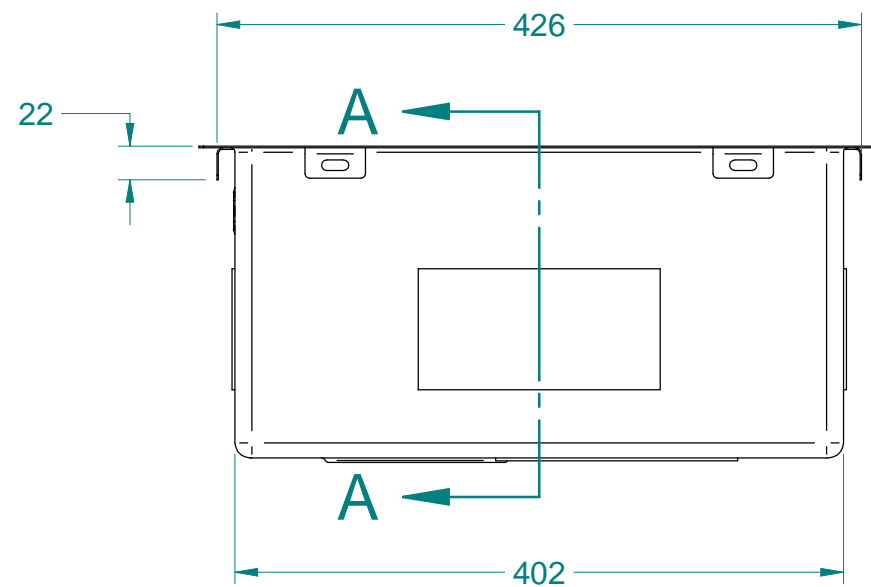
NOTE: ALL Dimensions are Reference!



1:5


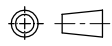


DETAIL B
1:2



SECTION A-A

NOTE: ALL Dimensions are Reference!

 www.acero.co.nz 45 Lunns Road Middleton Christchurch 8024 New Zealand Phone: 0800 2637237	Title: AA502, Gunmetal (500x400x200)				Drawn By: MDA-DN
	Tolerances: (Unless Stated)				Drawn Date: 05 Dec 2017
	X. = ± 2.0	Material: Stainless Steel, 304	Third Angle Projection	 Size: A4	Checked By: -
	X.X = ± 1.0	Size: 1.2mm	All Dimensions in mm		Checked Date: -
X.XX = ± 0.5		Finish: Gunmetal	Mass: 7.04 kg	Rev: 01	Drawing No: 430
Angles = ± 1.0°		Form: -	Sheet: 2 of 2	Status: Released	