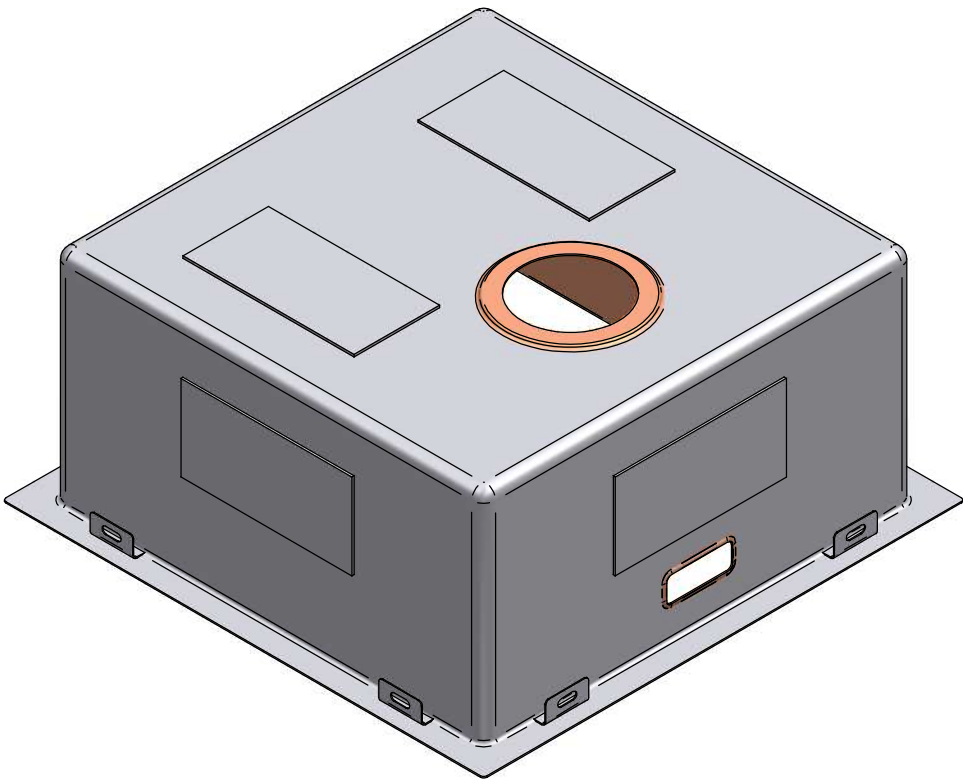
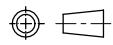


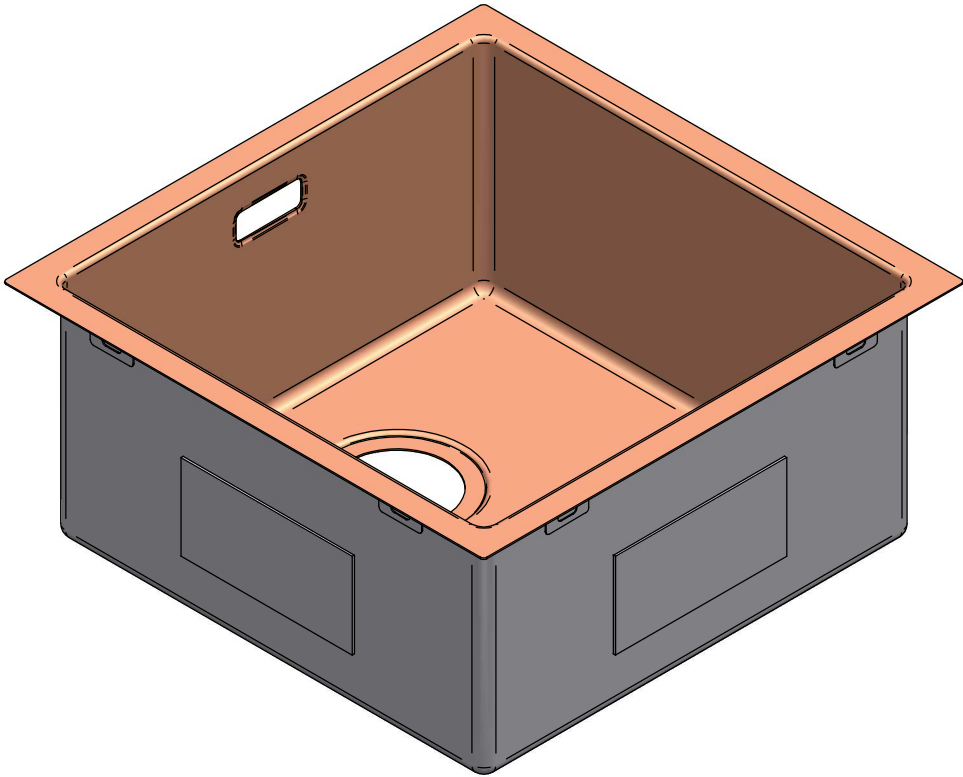
1:5

Part Number	Title	Material	Quantity
395	AA404 Copper (400x400x200)	Stainless Steel, 304	1

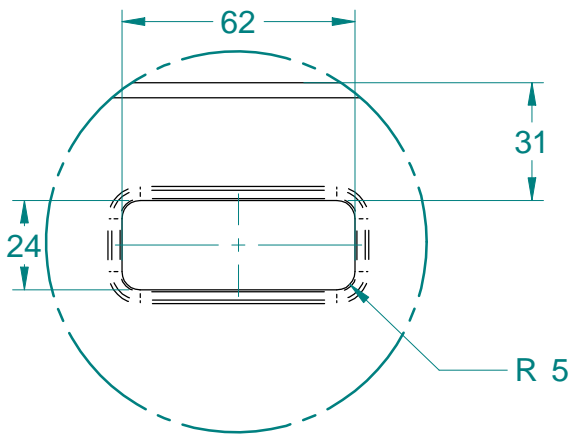


<div><div><div>Acero[®]</div><div>www.acero.co.nz</div><div>45 Lunns Road Middleton Christchurch 8024 New Zealand</div><div>Phone: 0800 2637237</div></div></div>	Title: AA404 Copper (400x400x200)				Drawn By:	MDA-DN
	Tolerances: (Unless Stated)				Drawn Date:	07 Dec 2017
	X. = ± 2.0	Material: Stainless Steel, 304	Third Angle Projection	 Size: A4	Checked By:	-
	X.X = ± 1.0	Size: 1.2mm	All Dimensions in mm		Checked Date:	-
X.XX = ± 0.5		Finish: Copper	Mass: 6.22 kg	Rev: 01	Drawing No: 396	
Angles = ± 1.0°		Form: -	Sheet: 1 of 2	Status: Released		

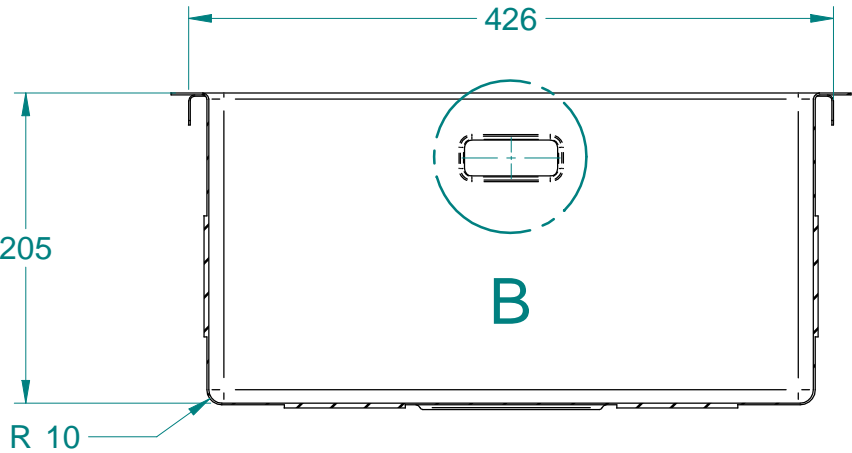
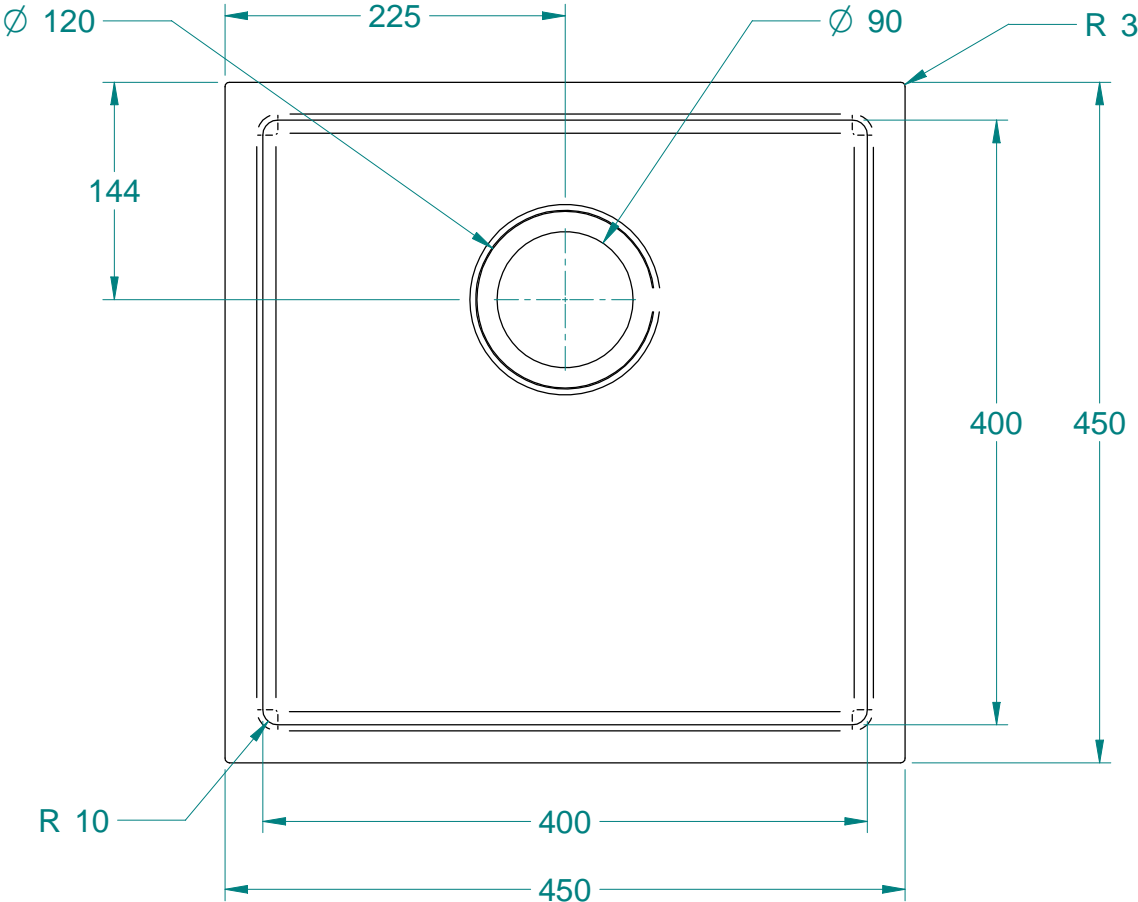
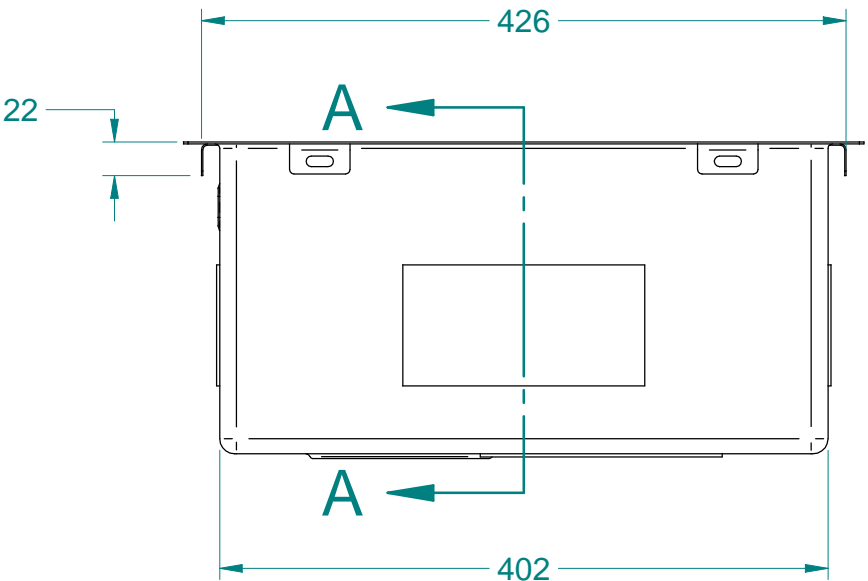
NOTE: ALL Dimensions are Reference!



1:5



DETAIL B
1:2



SECTION A-A

Acero[®]

www.acero.co.nz

45 Lunns Road Middleton Christchurch 8024 New Zealand

Phone: 0800 2637237

Title: AA404 Copper (400x400x200)

Tolerances: (Unless Stated)

X. = ± 2.0
X.X = ± 1.0
X.XX = ± 0.5
Angles = ± 1.0°

Material: Stainless Steel, 304

Size: 1.2mm

Finish: Copper

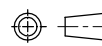
Form: -

Third Angle Projection

All Dimensions in mm

Mass: 6.22 kg

Sheet: 2 of 2



Size:

A4

Rev: 01

Status: Released

Drawn By:

MDA-DN

Drawn Date:

07 Dec 2017

Checked By:

-

Checked Date:

-

Drawing No: 396

NOTE: ALL Dimensions are Reference!