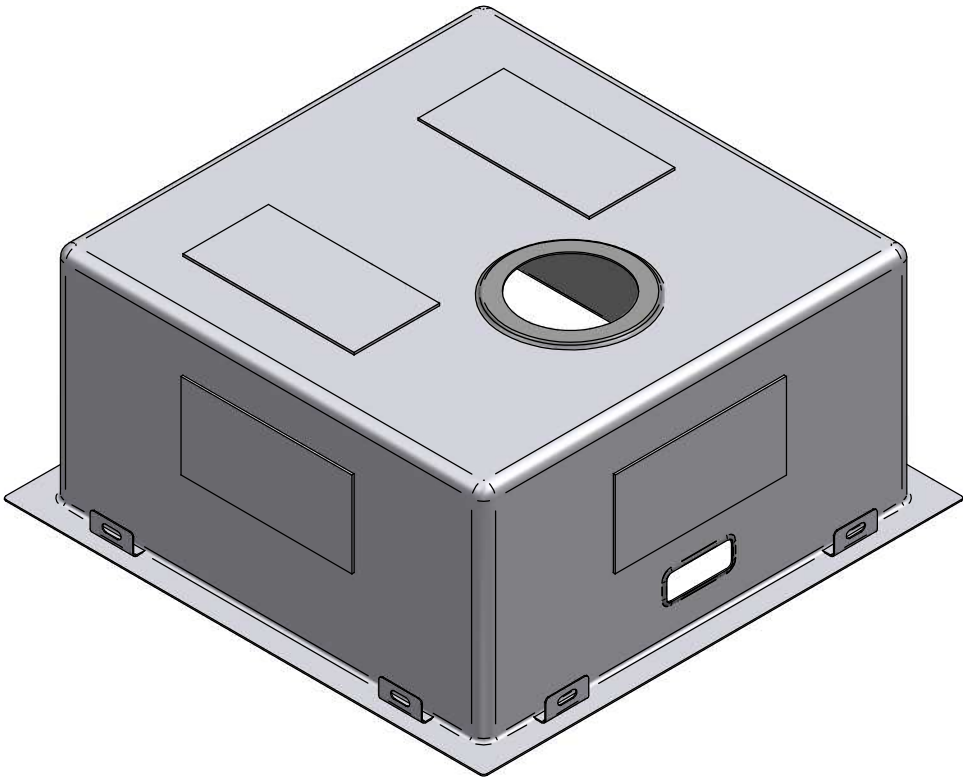
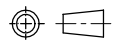


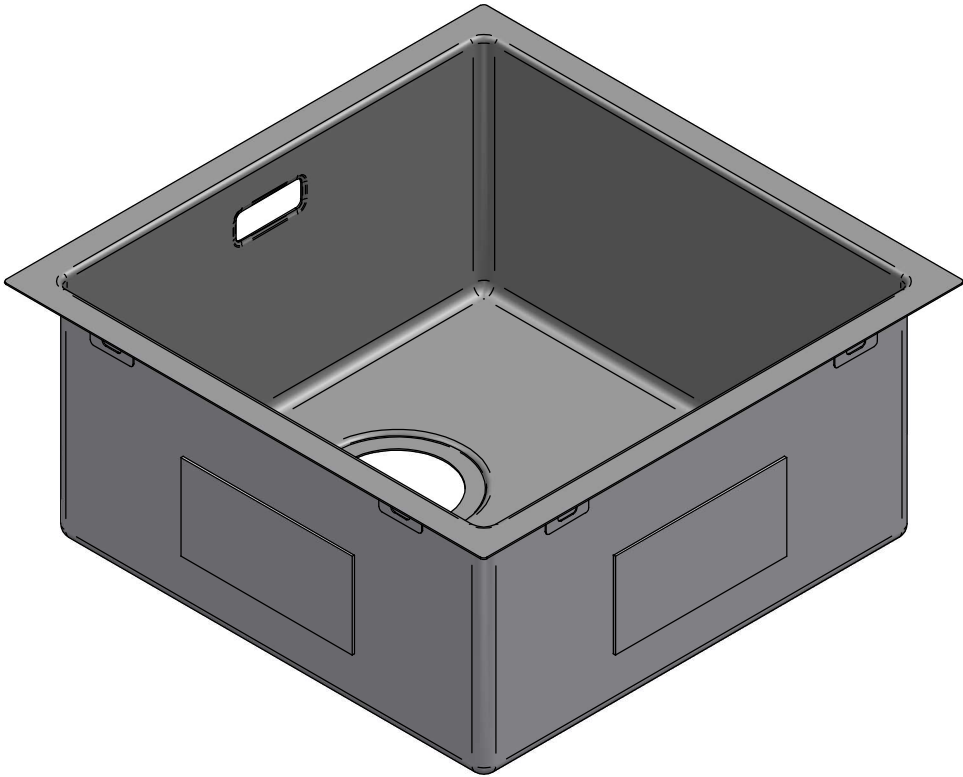
1:5

Part Number	Title	Material	Quantity
422	AA402, Gunmetal (400x400x200)	Stainless Steel, 304	1

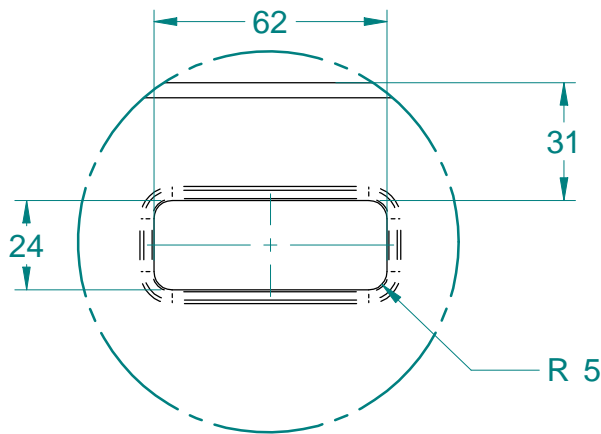


<div><div>Acero<sup>®</sup></div><div>www.acero.co.nz</div><div>45 Lunns Road Middleton Christchurch 8024 New Zealand</div><div>Phone: 0800 2637237</div></div>	Title: AA402, Gunmetal (400x400x200)				Drawn By:	MDA-DN
	Tolerances: (Unless Stated)				Drawn Date:	21 Dec 2017
	X. = ± 2.0	Material: Stainless Steel, 304	Third Angle Projection	 Size: A4	Checked By:	-
	X.X = ± 1.0	Size: 1.2mm	All Dimensions in mm		Checked Date:	-
	X.XX = ± 0.5	Finish: Gunmetal	Mass: 6.22 kg	Rev: 01	Drawing No: 423	
	Angles = ± 1.0°	Form: -	Sheet: 1 of 2	Status: Released		

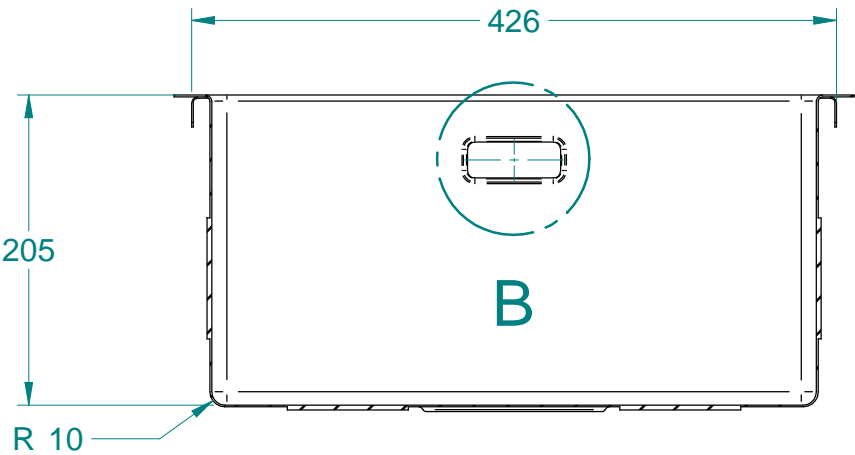
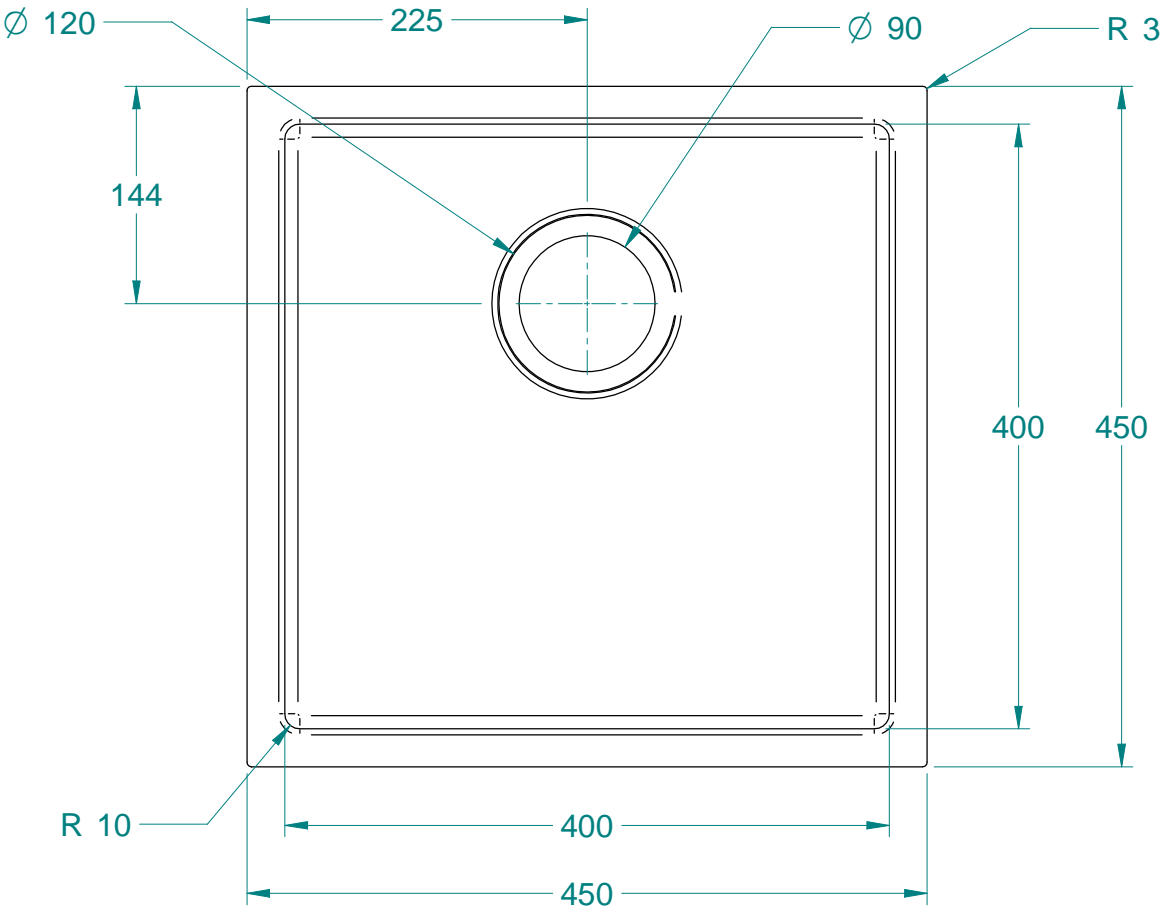
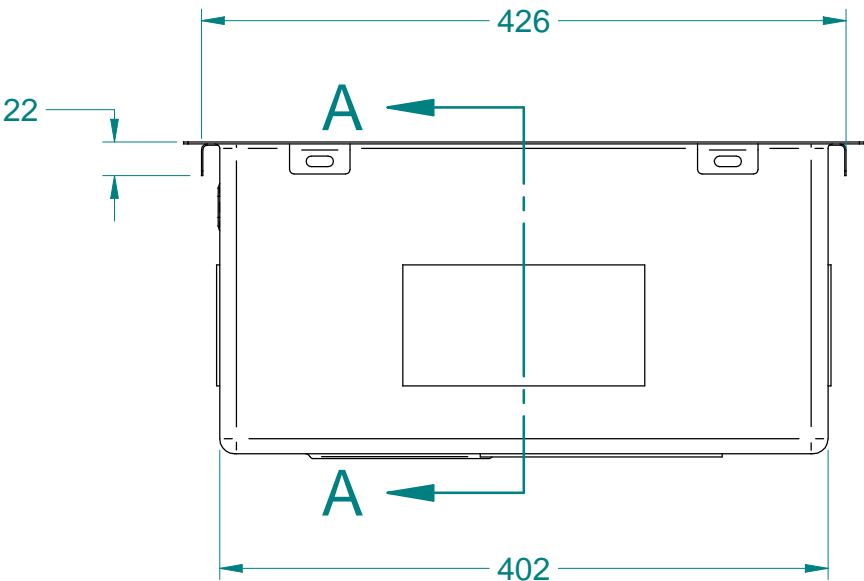
NOTE: ALL Dimensions are Reference!



1:5

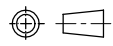


DETAIL B  
1:2



SECTION A-A

NOTE: ALL Dimensions are Reference!

<div>Acero<sup>®</sup></div> <div>www.acero.co.nz</div> <div>45 Lunns Road Middleton Christchurch 8024 New Zealand</div> <div>Phone: 0800 2637237</div>	Title: AA402, Gunmatel (400x400x200)				Drawn By:	MDA-DN
	Tolerances: (Unless Stated)				Drawn Date:	21 Dec 2017
	X. = ± 2.0	Material: Stainless Steel, 304	Third Angle Projection	 Size: A4	Checked By:	-
	X.X = ± 1.0	Size: 1.2mm	All Dimensions in mm		Checked Date:	-
X.XX = ± 0.5		Finish: Gunmetal	Mass: 6.22 kg	Rev: 01	Drawing No: 423	
Angles = ± 1.0°		Form: -	Sheet: 2 of 2	Status: Released		